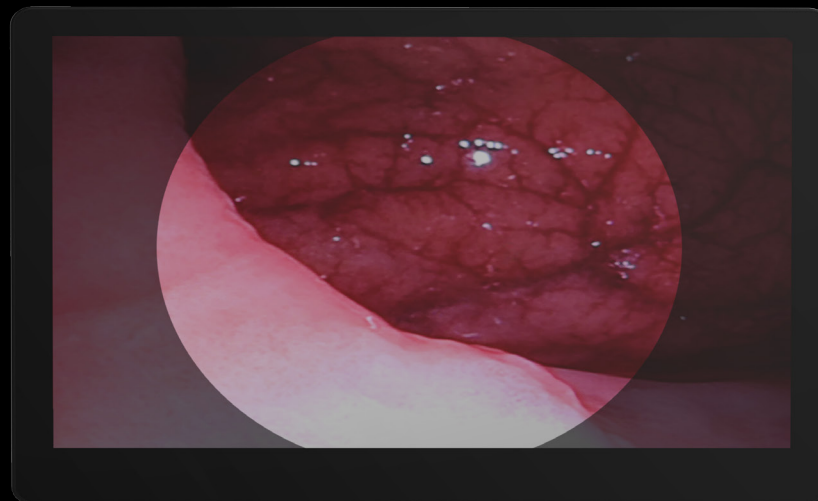


MULTIX

CATALOGUE INFORMATION TECHNOLOGY



Twin Columns **X4** Platform
110 - 130

X5 Platform **Single Column**
110 - 150

X4 110/130

Twin columns

These Platforms are tailored for endoscopy systems but can also accommodate devices for various other applications. It offers ample storage space, featuring a dual-column design built on a modular framework.

Cable management

Both models come equipped with cable clips and a power strip nestled inside the column. It is also possible to include an insulator transformer of up to 2000W.

2/4

Height Adjustable Shelves



FOOT PRINT BASE

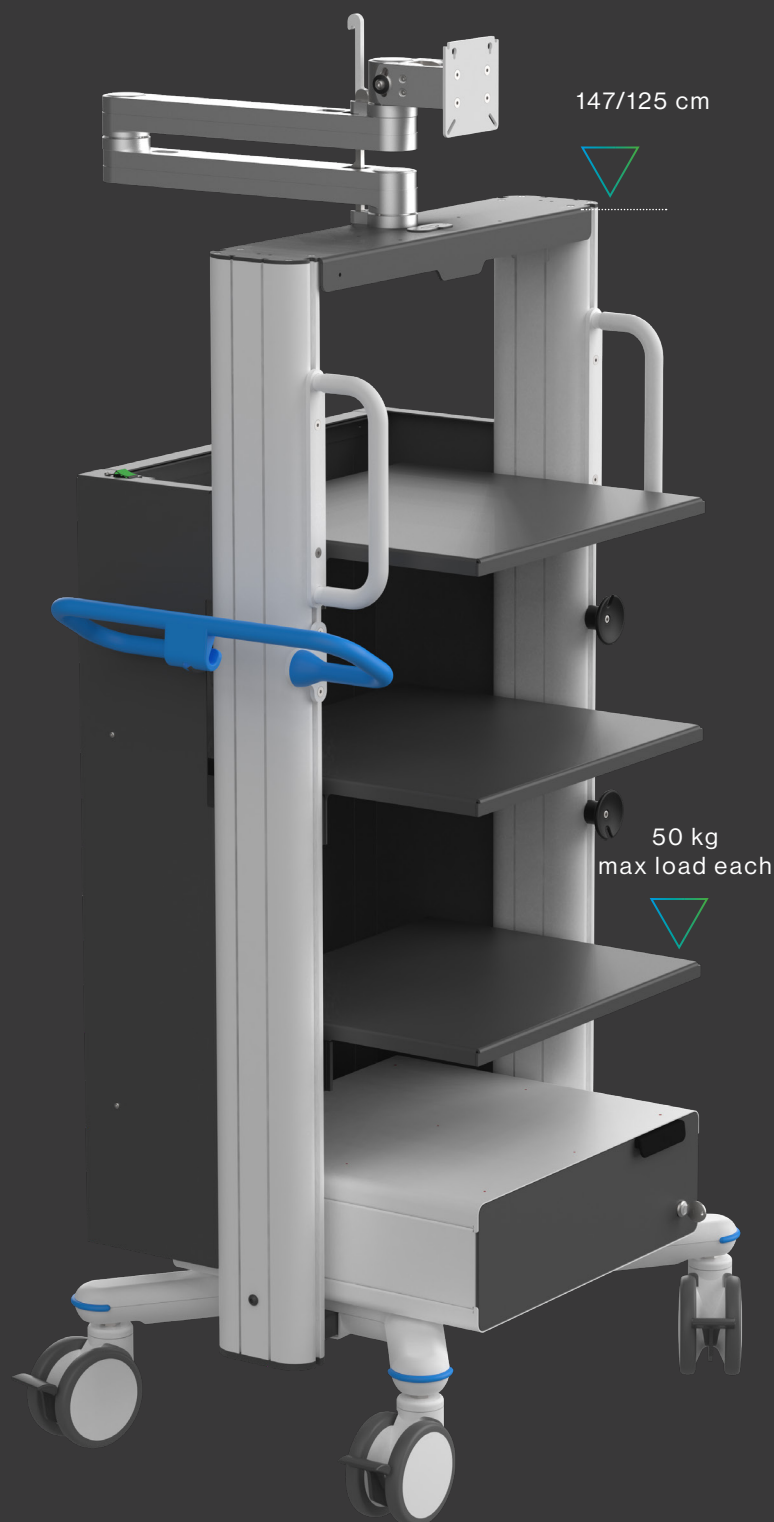
(W)725X(D)550 mm

TWIN WHEELS Ø 125 mm

4 with Brakes, 2 ESD

Compliant with:
MDR 2017/745
EN 60601-1

Double pivot arm
for monitor up to 32"





158/180 cm



VESA Pole
for monitor up to 32"

X5 110/150

Single Column

Tall columns for placing monitors in higher and accommodating several devices

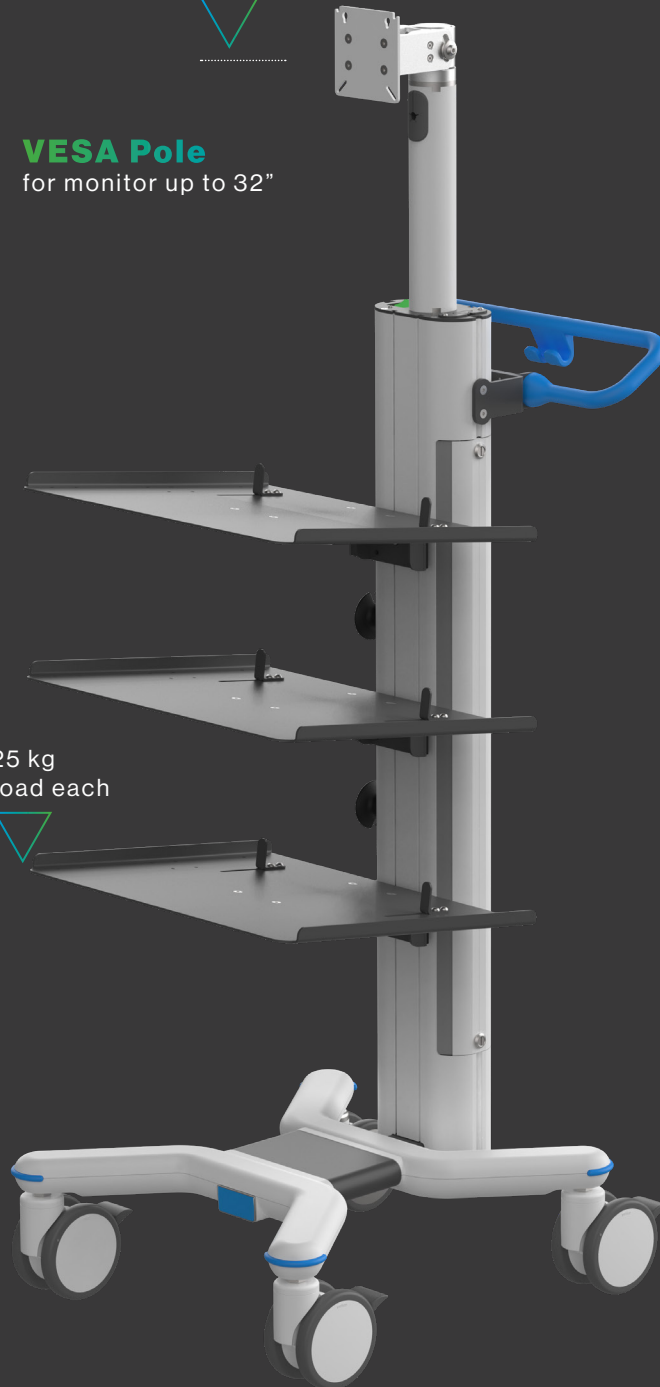
Cable management

X5 models come equipped, inside the column, with a power strip and cable clips. It is also possible to include an isolation transformer of up to 2000W on a shelf or underneath the base.

2/4

Height Adjustable Shelves
Inclined 8°

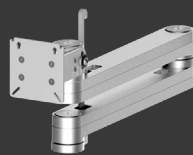
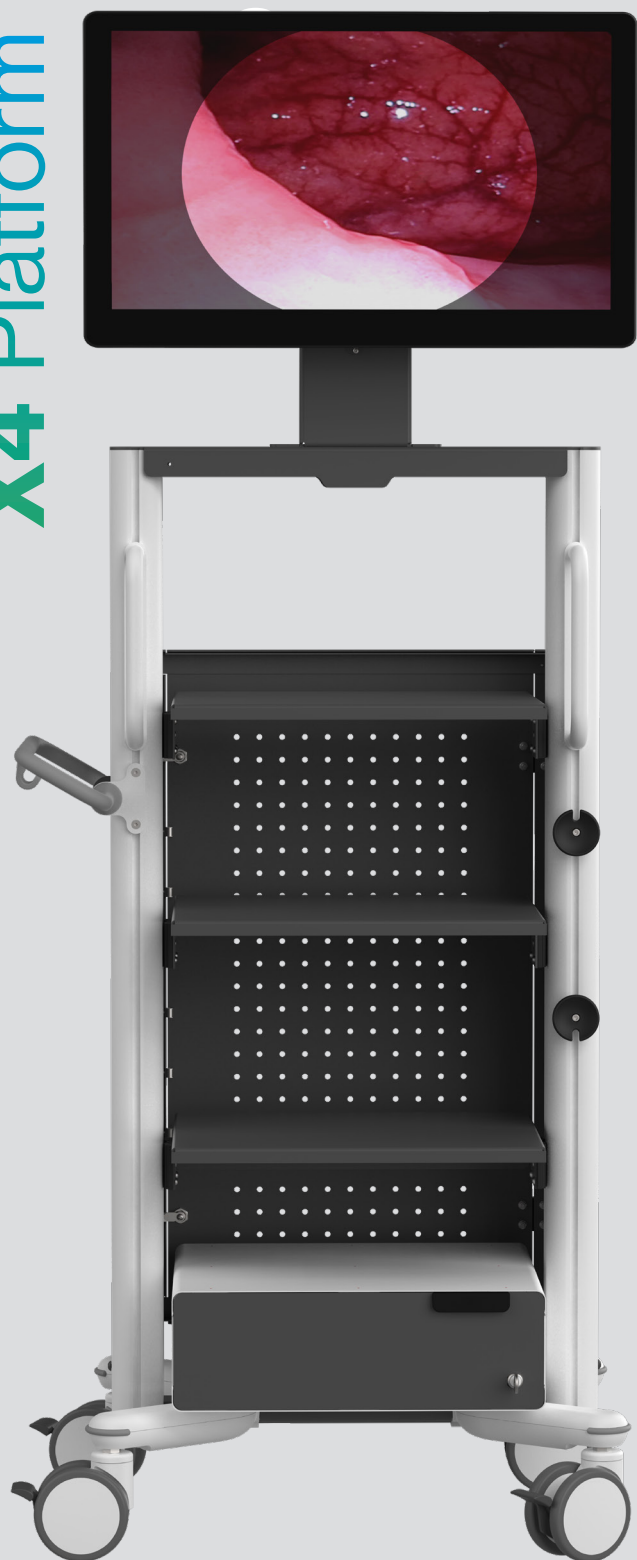
25 kg
max load each



FOOT PRINT LONG BASE
(W)550X(D)575/725 mm
TWIN WHEELS Ø 125 mm
4 with Brakes, 2 ESD

Compliant with:
MDR 2017/745
EN 60601-1

X4 Platform X



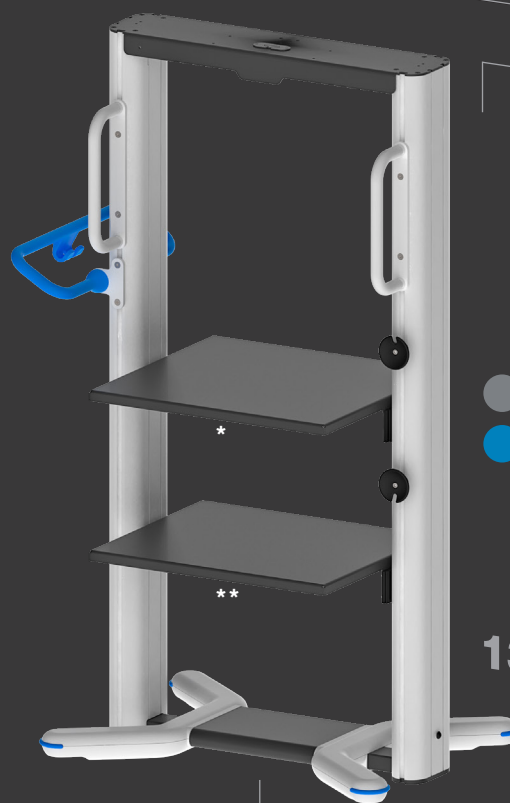
P



H



W



Shelves

N.2 in the standard version

Dimensions

W (520) D (450)*

W (520) D (410)**

With Multi-plug support

Accent Color

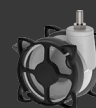
● G Gray

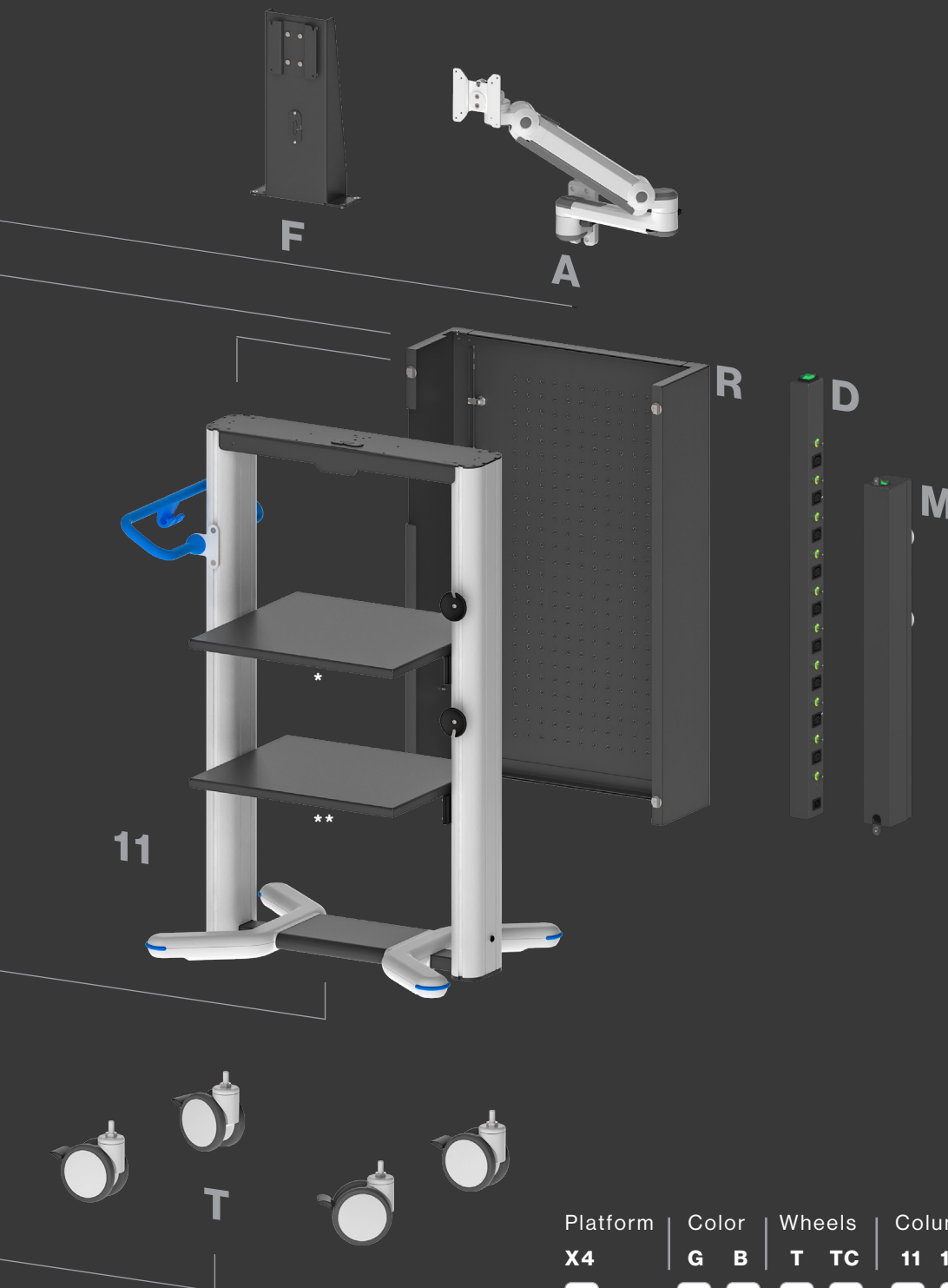
● B Blue

13



TC

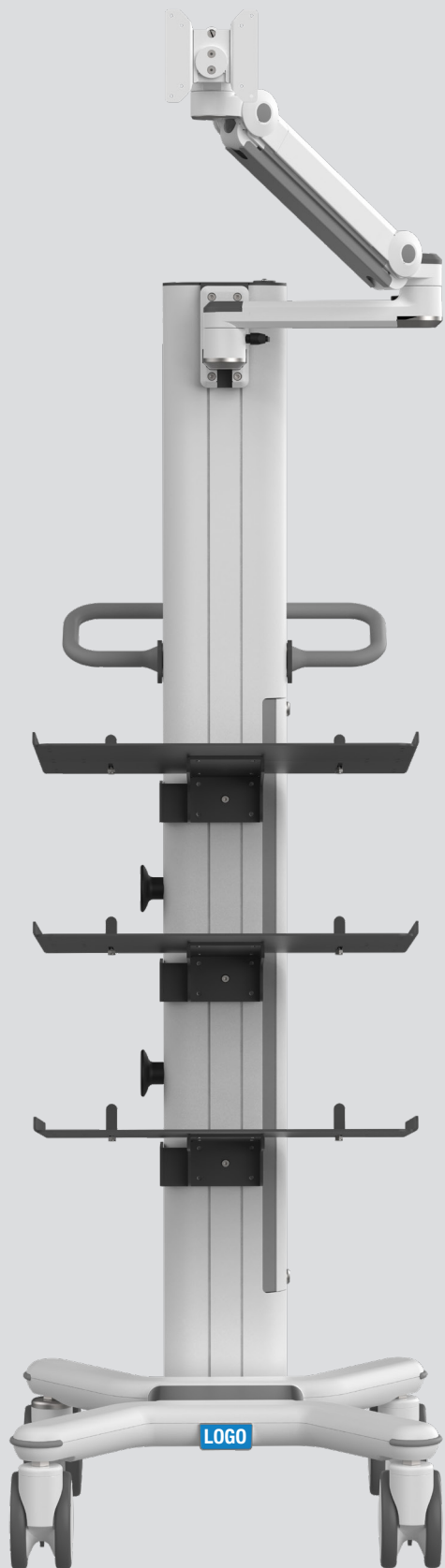




TC **WHEELS** Ø 125 mm
4 with Brakes, 2 ESD
and Cable Guard

Platform	Color		Wheels		Column		Rear Cover/Plugs				Monitor Support					
X4	G	B	T	TC	11	13	/	R	D	M	/	F	W	H	P	A
	-				-						-					

X5 Platform X



Shelves

N.2 in the standard version
Dimensions
W (480) D (530)
For X5L Platform

Accent Color

-  **G** Gray
-  **B** Blue

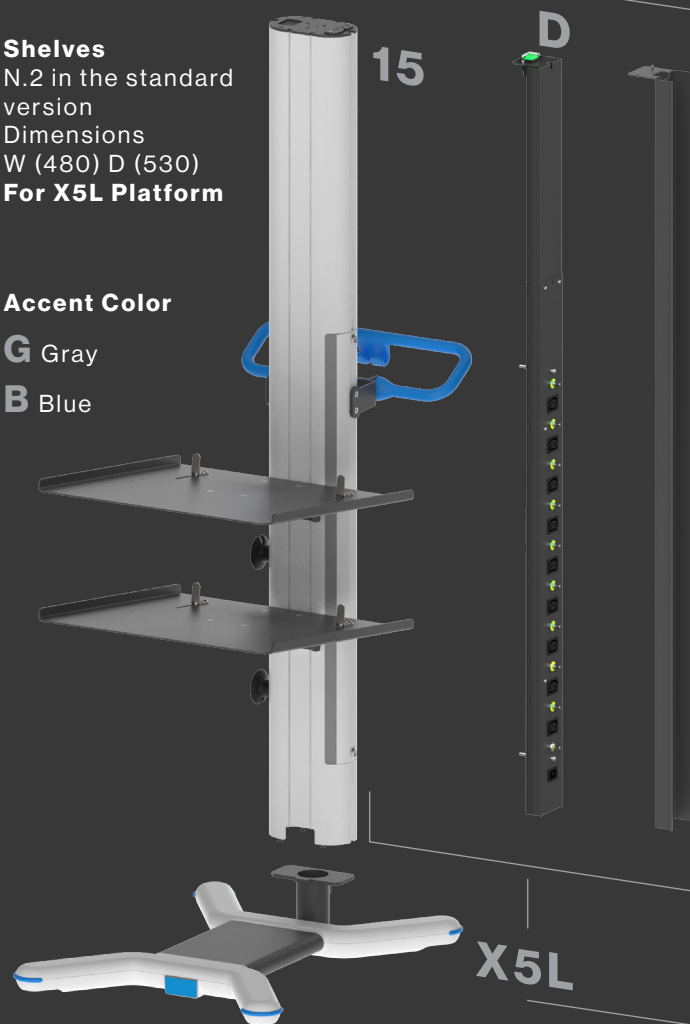


15

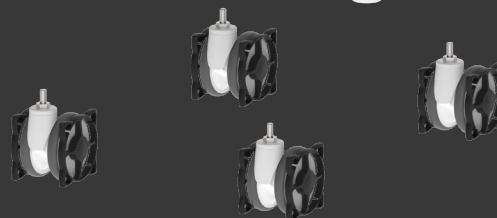
D

H15

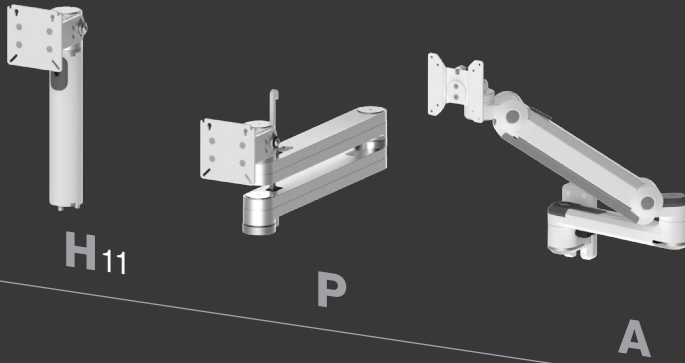
N



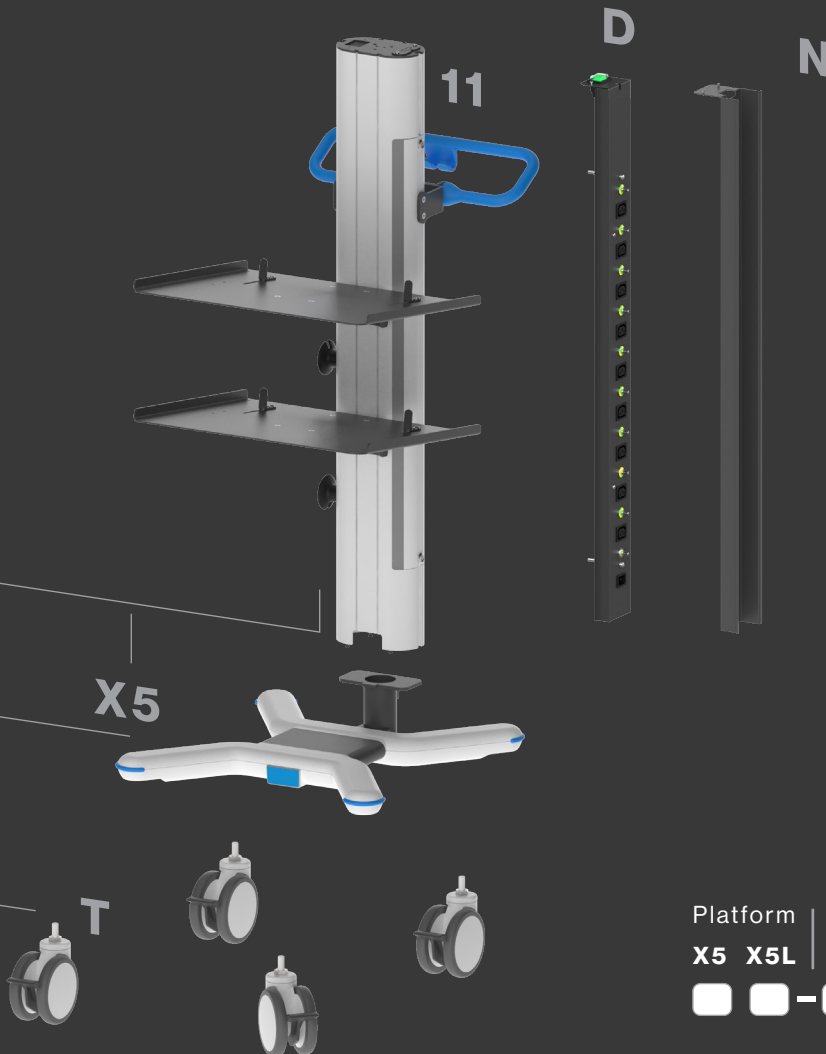
X5L



TC



N.2 in the standard
version
Dimensions
W (480) D (430)
For X5 Platform



F	Fixed support VESA 100 and adaptor up to VESA 400 x600
W	Tilting (+10- 15°) with screw system
H	Tilting/Swivelling Up To 20Kg
P	Tilting/3 Swivelling 2 arm of 400 mm
A	Articulated arm Up To 15 Kg Tilting/swivellin/Up-down
D	Multi-plug DIN N.9 Plugs and Main Switch
N	Multi-plug Not included
11	COLUMN (H 1100mm- Total H. 1250)
15	COLUMN (H 1500mm- Total H. 1650)
X5L	FOOT PRINT (W)550x(D)725 mm
X5	FOOT PRINT (W)550x(D)575 mm
T	WHEELS Ø 125 mm 4 with Brakes, 2 ESD
TC	WHEELS Ø 125 mm 4 with Brakes, 2 ESD and Cable Guard

Platform		Color		Wheels		Column		Multiplug		Monitor Support					
X5	X5L	G	B	T	TC	11	15	D	N	/	F	W	H	P	A
<input type="checkbox"/>	<input type="checkbox"/>	- <input type="checkbox"/>	<input type="checkbox"/>	<input type="checkbox"/>	<input type="checkbox"/>	- <input type="checkbox"/>	<input type="checkbox"/>	<input type="checkbox"/>	<input type="checkbox"/>	- <input type="checkbox"/>	<input type="checkbox"/>	<input type="checkbox"/>	<input type="checkbox"/>	<input type="checkbox"/>	<input type="checkbox"/>



Main switch



Twin columns



Cable management

The power strip can be easily reached through a rear access panel. Every plug has its equipotential contact and a cable clip

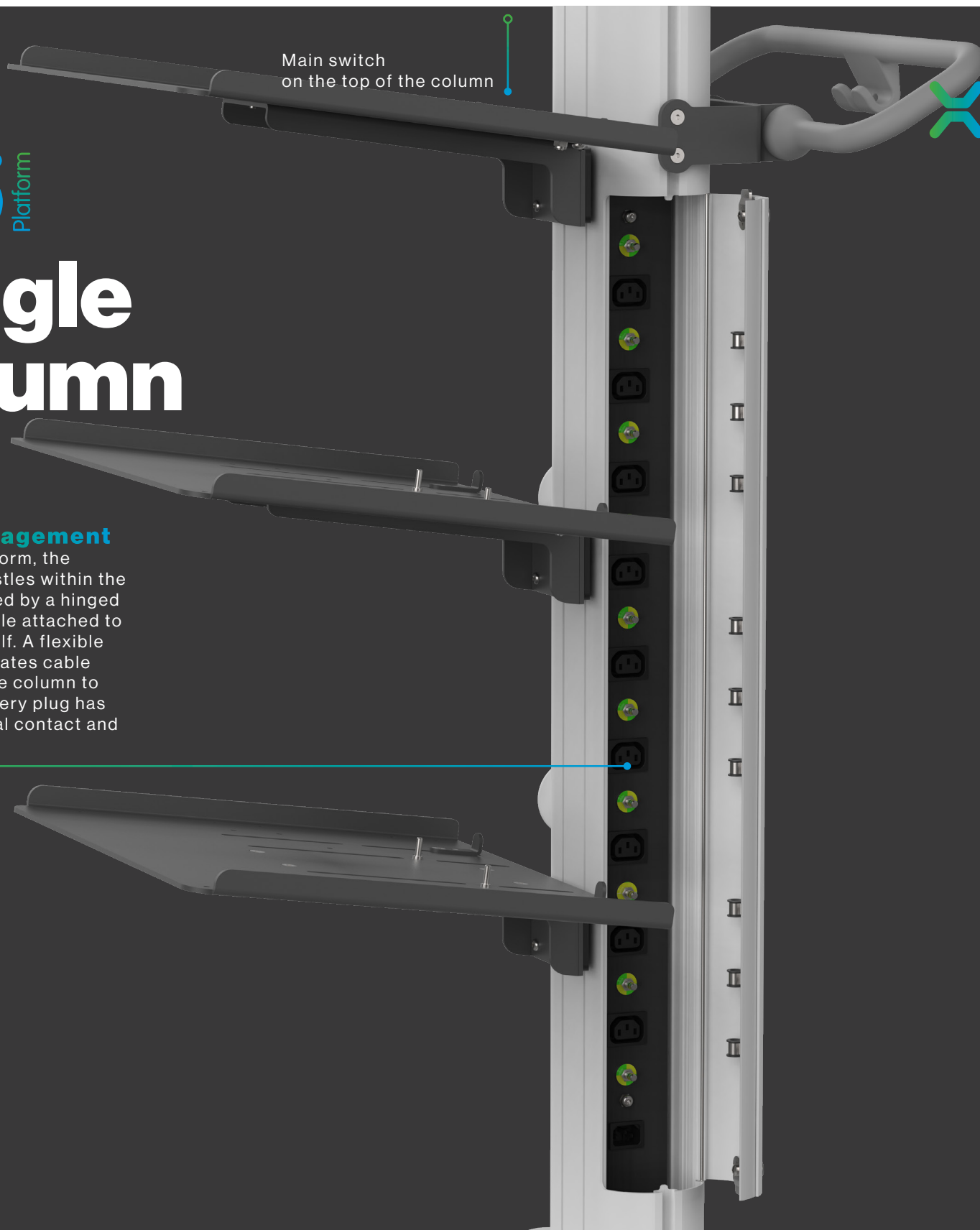
X5 Platform

Single column

Cable management

On the X5 platform, the power strip nestles within the column, shielded by a hinged aluminium profile attached to the column itself. A flexible PVC seal facilitates cable routing from the column to the devices. Every plug has its equipotential contact and a cable clip

Main switch
on the top of the column



X4 SHELF A

Dimensions
(W) 520mm
(D) 450mm

max load 50kg



Available for:
X4

X4 SHELF B With Multi-plug support

Dimensions
(W) 520mm
(D) 410mm

max load 50kg



Available for:
X4

X5 SHELF

Dimensions
(W) 480mm
(D) 430mm
(D) 530mm (X5L)

Inclination 8°

max load 25kg



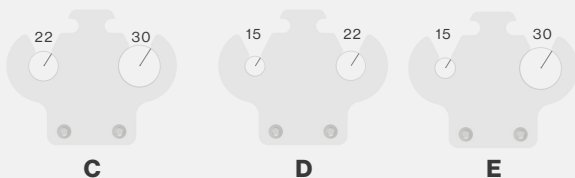
Available for:
X5

PROBE HOLDER C-D-E

PMMA Transparent

Max load 3Kg

Available for:
X5



PROBE HOLDER F

PMMA Transparent

Max load 3Kg

Available for:
X4



all the accessories you need*

X4 Platform
110 - 130



X5 Platform
110 - 150



*

Ask for custom
accessories, we
will design
them for your
application!



VESA ADAPTER

VESA up to 400x600mm
up to 55" monitor



Available for:
X4 AND X5

STEEL DRAWER

with KEY LOCKING SYSTEM

Inner dim.
(W) 384mm
(D) 400mm
(H) 130 mm

Outer dim.
(W) 500 mm
(D) 460 mm
(H) 160mm



Max load 6 Kg

Available for:
X4

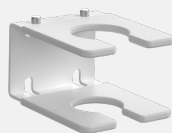
CAMERA/PROBE HOLDER

A
FOR X5
Inner ø min 20 mm
Inner ø max 55 mm
Height 82mm



A

B
FOR X5
Inner ø min 34 mm
Inner ø max 39 mm
Height 52mm



B

C
FOR X4
Outer ø min 31,8 mm



C

AL DRAWER K

with KEY LOCKING SYSTEM

Inner dim.
(W) 350mm
(D) 250mm
(H) 110 mm

Outer dim.
(W) 465 mm
(D) 317 mm
(H) 134mm



Max load 3Kg

Available for:
X5

COLUMN RAIL

(W) 300mm,
Max load 4Kg



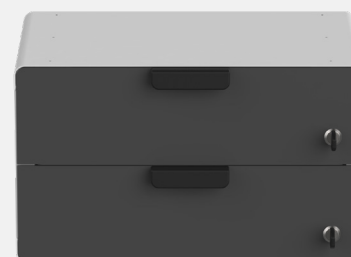
Available for:
X4
X5

ISO DRAWER 30X40

with KEY LOCKING SYSTEM

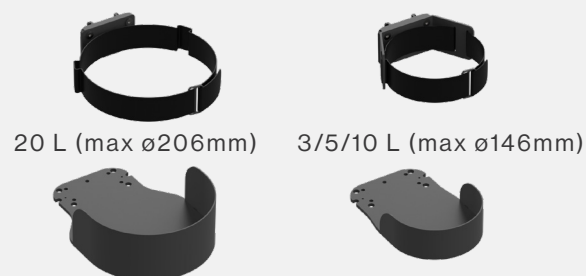
Outer dim.
(W) 465 mm
(D) 317 mm
(H) 268mm

Max load 6Kg



Available for:
X5

SINGLE OXYGEN SUPPORT



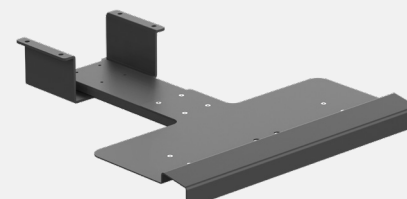
20 L (max ø206mm) 3/5/10 L (max ø146mm)

Available for:
X4

QWERTY TRAY

(W) 490mm
(D) 155mm

Max load 1Kg



Available for:
X4



TouchPoint Group

Multix Solutions s.r.l.
phone +39 031 4100263

info@multix-trolley.com
www.multix-trolley.com

Via Padre Rovagnati, 2
22066 Mariano Comense
COMO - ITALY

Made in Italy
