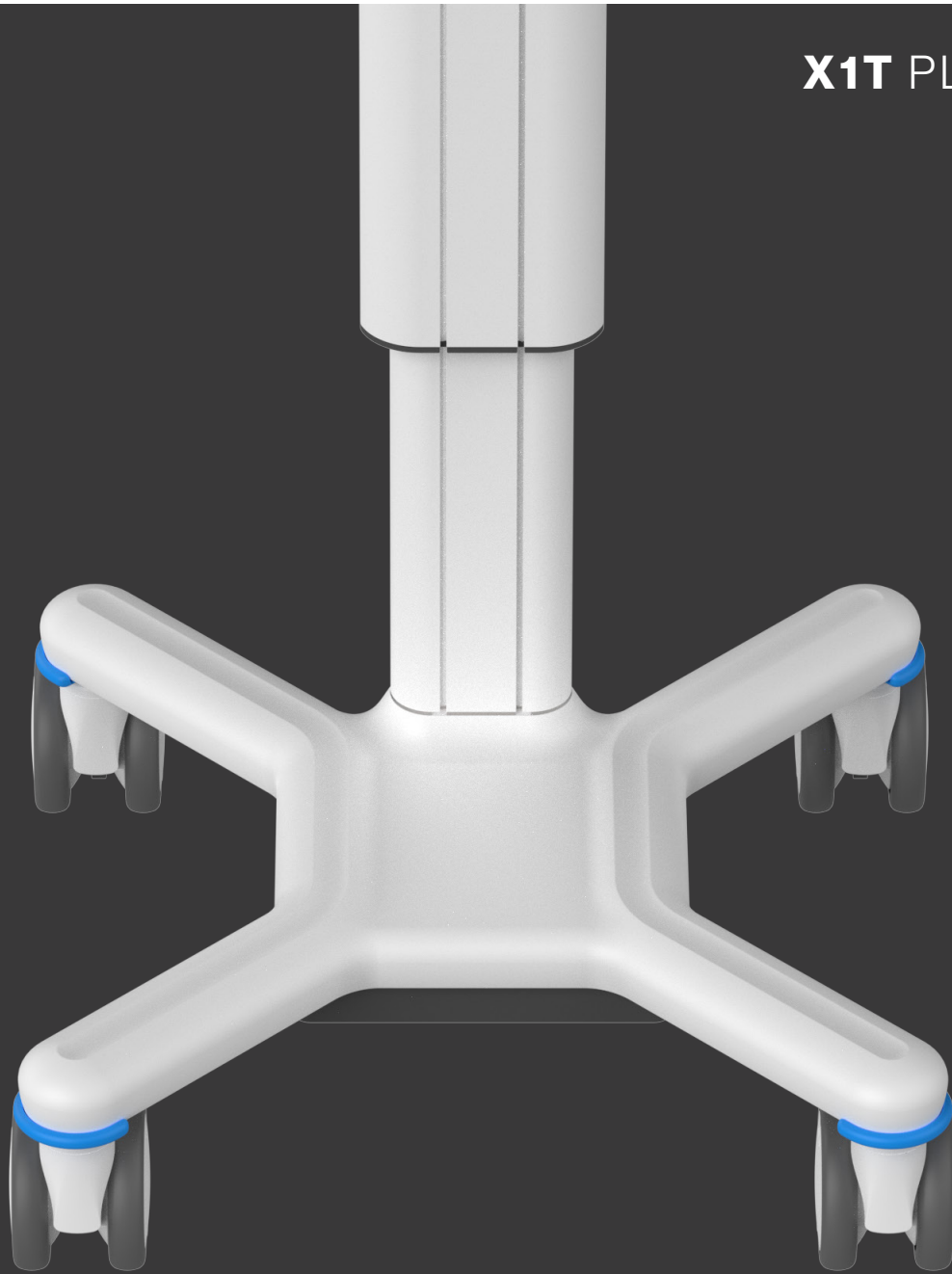


X1T PLATFORM 



**NEXT LEVEL**  
MEDICAL TROLLEY

## X1T PLATFORM

# Ergonomic and Agile

Our platform, the X1T series, epitomizes ergonomic excellence and agility in medical equipment. Thanks to its gas spring column that affords an impressive 35 cm of smooth vertical travel. This feature not only enhances user comfort but also facilitates swift manoeuvrability in dynamic medical environments.

### **Tailored to Your Application**

Recognizing the diverse needs of medical practitioners, our X1T platform offers versatile configurations meticulously outlined in accompanying documentation. Moreover, we provide customizable options to meet your requirements, whether dimensional customization or specialized add-on features.

### **Experience the Difference**

More than just equipment, the X1T platform is a reflection of our commitment to enhancing healthcare delivery. Discover how its ergonomic design, agility, and customizable features can revolutionize your practice, setting a new standard for efficiency and mobility in medical care.

**Multix: Your Partner in Healthcare Excellence**



**X1T-BS-20H-R**

Without accessories



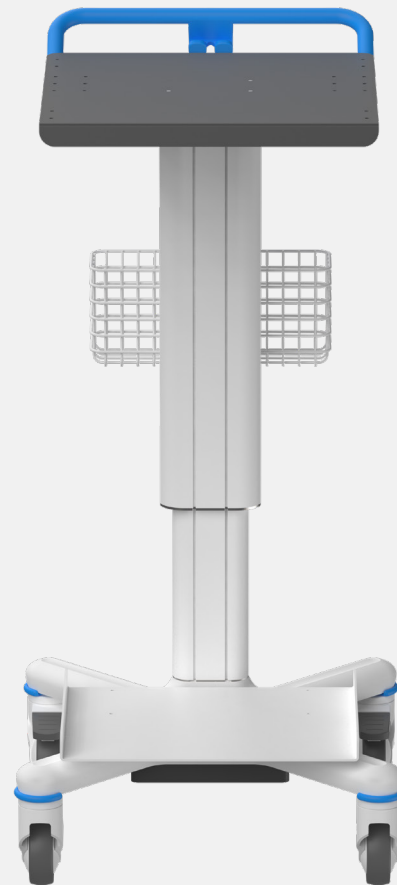
**X1TGT40CF** accessorized with:

<b>PC Drawer</b>	(Code 014MLTACC)
<b>Qwerty Tray</b>	(Code 025MLTACC)
<b>Mouse Pad</b>	(Code 017MLTACC)
<b>Probe Holder</b>	(Code 023MLTACC)
<b>Side Rail</b>	(Code 028MLTACC)

Let us inspire you

# areas of application

- Information Technology
- Telemedicine
- Endoscopy and Operating room
- ECG
- Ultrasound
- Rehabilitation



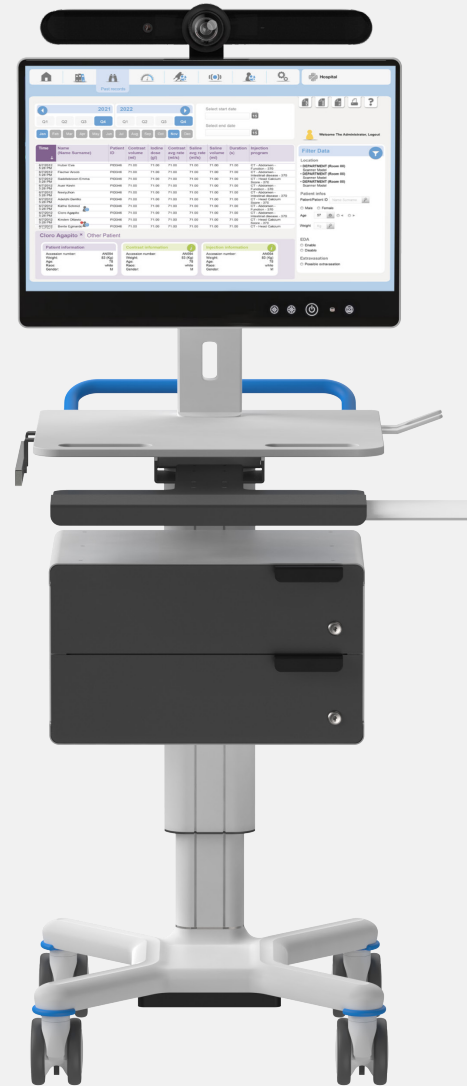
**X1TBS20M** accessorized with:

**Wired Bin** (Code 031MLTACC )

**Printer Tray** (Code 021MLTACC )



**X1TBT30N** accessorized with:  
**N.02 AL Drawer** (Code 003MLTACC)



**X1Tail** accessorized with:  
**N.01 ISO Drawer** (Code 004MLTACC)  
**Qwerty Tray** (Code 025MLTACC)  
**Mouse Pad** (Code 017MLTACC)  
**Barcode B** (Code 006MLTACC)  
**Side Rail** (Code 028MLTACC)

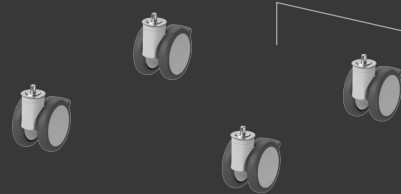
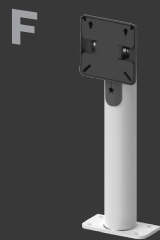
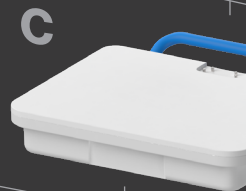
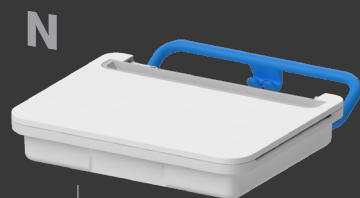
Let us inspire you

# X1T Platform



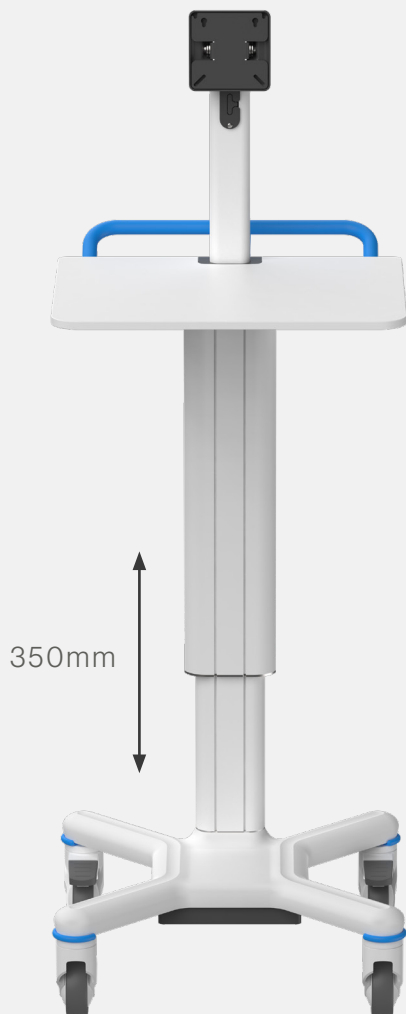
## Accent Color

-  **G** Gray
-  **B** Blue



T





## X1T Platform

General information	
<b>Base foot print</b>	520x520mm
<b>Max Load</b>	50kg
<b>Top Shelf Size</b>	510(W)X410(D)mm
<b>Top Material</b>	HPL
<b>Compliant with</b>	MDR 2017/745 EN 60601-1
<b>Max Console Load</b>	20kg
<b>Console height range</b>	820 - 1170 mm
<b>Center Vesa height range</b>	1146 - 1496 mm
<b>Vesa max load</b>	12kg
<b>Vesa swivel</b>	(+/-30)
<b>Vesa tilting</b>	-0°+40°
<b>Height adj</b>	35 cm
<b>Packaging</b>	800x600x400 mm
<b>Total Weight</b> without Accessories	30 kg

When using the TWIN 100 mm wheel, the trolley is 20 mm lower.

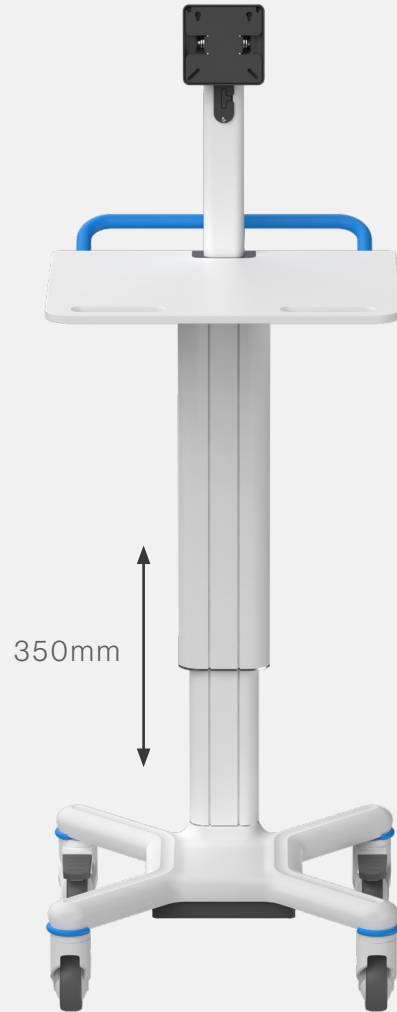
Ref.	Color Handle Bumper	Wheel	Gas spring strenght	Upper column max load
<b>X1T-BS-20L-F</b>	Blue	Single 100mm	200N	17 kg
<b>X1T-BT-20L-F</b>	Blue	TWIN 100mm(2ESD)	200N	17 kg
<b>X1T-BS-30L-F</b>	Blue	Single 100mm	300N	26 kg
<b>X1T-BT-30L-F</b>	Blue	TWIN 100mm(2ESD)	300N	26 kg
<b>X1T-BS-40L-F</b>	Blue	Single 100mm	400N	35 kg
<b>X1T-BT-40L-F</b>	Blue	TWIN 100mm(2ESD)	400N	35 kg

● ● \*AVAILABLE ALSO IN GREY





## X1T Platform



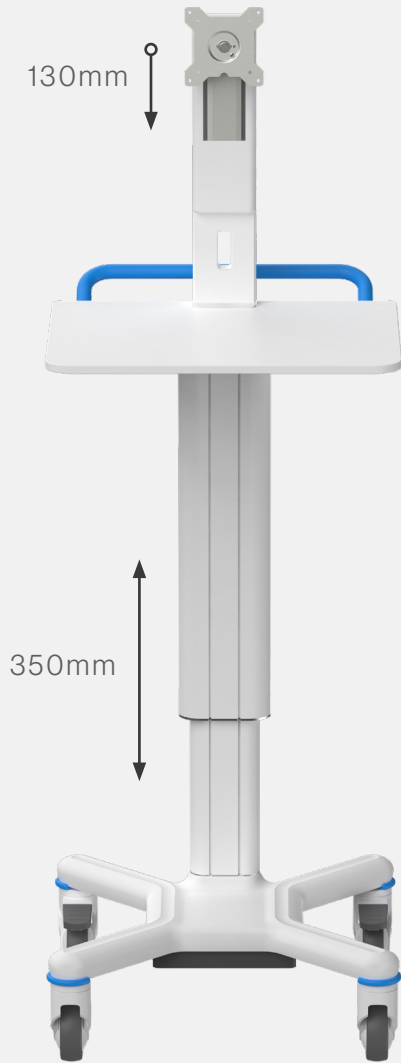
General information	
<b>Base foot print</b>	520x520mm
<b>Max Load</b>	50kg
<b>Top Shelf Size</b>	510(W)X410(D)mm
<b>Top Material</b>	HPL with front handle
<b>Compliant with</b>	MDR 2017/745 EN 60601-1
<b>Max Console Load</b>	20kg
<b>Console height range</b>	820 - 1170 mm
<b>Center Vesa height range</b>	1146 - 1496 mm
<b>Vesa max load</b>	12kg
<b>Vesa swivel</b>	(+/30)
<b>Vesa tilting</b>	-0°+40°
<b>Height adj</b>	35 cm
<b>Packaging</b>	800x600x400 mm
<b>Total Weight</b> without Accessories	30 kg

When using the TWIN 100 mm wheel, the trolley is 20 mm lower.

Ref.	Color Handle Bumper	Wheel	Gas spring strenght	Upper column max load
<b>X1T-BS-20H-F</b>	Blue	Single 100mm	200N	17 kg
<b>X1T-BT-20H-F</b>	Blue	TWIN 100mm(2ESD)	200N	17 kg
<b>X1T-BS-30H-F</b>	Blue	Single 100mm	300N	26 kg
<b>X1T-BT-30H-F</b>	Blue	TWIN 100mm(2ESD)	300N	26 kg
<b>X1T-BS-40H-F</b>	Blue	Single 100mm	400N	35 kg
<b>X1T-BT-40H-F</b>	Blue	TWIN 100mm(2ESD)	400N	35 kg



\*AVAILABLE ALSO IN GREY



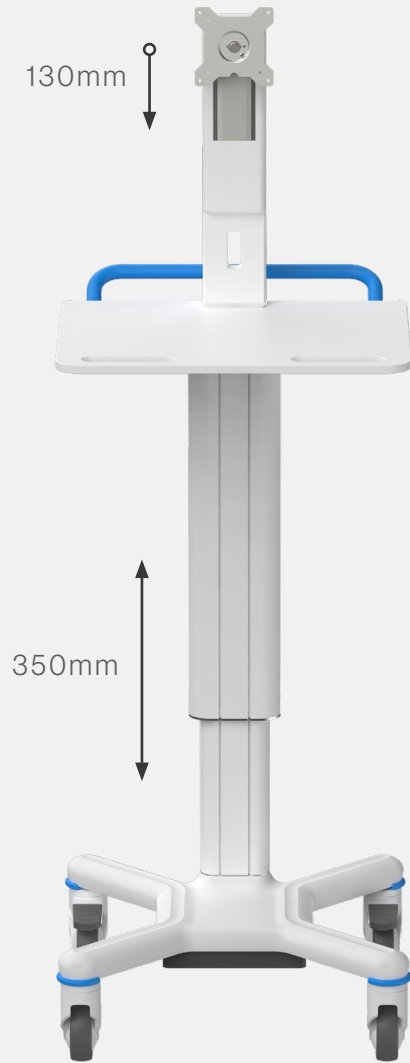
## X1T Platform

General information	
<b>Base foot print</b>	525x525mm
<b>Max Load</b>	50kg
<b>Top Shelf Size</b>	510(W)X410(D)mm
<b>Top Material</b>	HPL
<b>Compliant with</b>	MDR 2017/745 EN 60601-1
<b>Max Console Load</b>	20kg
<b>Console height range</b>	820 - 1170 mm
<b>Center Vesa height range</b>	1090 - 1570 mm
<b>Vesa max load</b>	12kg
<b>Vesa swivel</b>	(+/-90)
<b>Vesa tilting</b>	-15°+25°
<b>Height adj</b>	35 cm
<b>Packaging</b>	800x600x400 mm
<b>Total Weight</b> without Accessories	30 kg

When using the TWIN 100 mm wheel, the trolley is 20 mm lower.

Ref.	Accent Color	Wheel	Gas spring strenght	Upper part max load
<b>X1T-BS-20L-R</b>	Blue	Single 100mm	200N	17
<b>X1T-BT-20L-R</b>	Blue	TWIN 100mm(2ESD)	200N	17
<b>X1T-BS-30L-R</b>	Blue	Single 100mm	300N	26
<b>X1T-BT-30L-R</b>	Blue	TWIN 100mm(2ESD)	300N	26
<b>X1T-BS-40L-R</b>	Blue	Single 100mm	400N	35
<b>X1T-BT-40L-R</b>	Blue	TWIN 100mm(2ESD)	400N	35

● ● \*AVAILABLE ALSO IN GREY



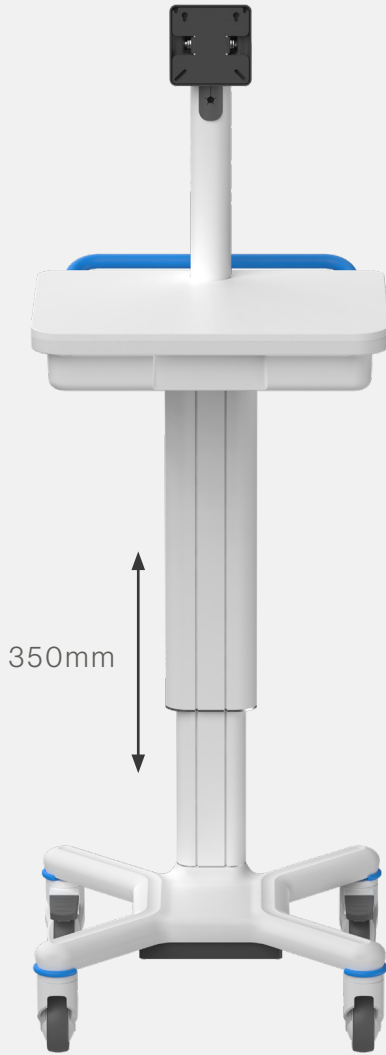
## X1T Platform

General information	
Base foot print	520x520mm
Max Load	50kg
Top Shelf Size	510(W)X410(D)mm
Top Material	HPL with front handle
Compliant with	MDR 2017/745 EN 60601-1
Max Console Load	20kg
Console height range	820 - 1170 mm
Center Vesa height range	1090 - 1570 mm
Vesa max load	12kg
Vesa swivel	(+/-90)
Vesa tilting	-15°+25°
Height adj	35 cm
Packaging	800x600x400 mm
Total Weight without Accessories	30 kg

When using the TWIN 100 mm wheel, the trolley is 20 mm lower.

Ref.	Accent Color	Wheel	Gas spring strength	Upper part max load
X1T-BS-20H-R	Blue	Single 100mm	200N	17
X1T-BT-20H-R	Blue	TWIN 100mm(2ESD)	200N	17
X1T-BS-30H-R	Blue	Single 100mm	300N	26
X1T-BT-30H-R	Blue	TWIN 100mm(2ESD)	300N	26
X1T-BS-40H-R	Blue	Single 100mm	400N	35
X1T-BT-40H-R	Blue	TWIN 100mm(2ESD)	400N	35

● \*AVAILABLE ALSO IN GREY



## X1T Platform

General information	
<b>Base foot print</b>	520x520mm
<b>Case (S09) inner size</b>	(W)440 (D)280 (H) 74 mm
<b>Max Load</b>	50kg
<b>Top Shelf Size</b>	(W)513 (D)406mm
<b>Top Material</b>	HPL/PC case
<b>Compliant with</b>	MDR 2017/745 EN 60601-1
<b>Max Console Load</b>	20kg
<b>Console height range</b>	855 - 1205 mm
<b>Center Vesa height range</b>	1210 - 1560 mm
<b>Vesa max load</b>	12kg
<b>Vesa swivel</b>	(+/-30)
<b>Vesa tilting</b>	-0°+40°
<b>Height adj</b>	35 cm
<b>Packaging</b>	800x600x400 mm
<b>Total Weight</b> without Accessories	30 kg

When using the TWIN 100 mm wheel, the trolley is 20 mm lower.

Ref.	Accent Color	Wheel	Gas spring strenght	Upper part max load
<b>X1T-BS-20C-F</b>	Blue	Single 100mm	200N	17
<b>X1T-BT-20C-F</b>	Blue	TWIN 100mm(2ESD)	200N	17
<b>X1T-BS-30C-F</b>	Blue	Single 100mm	300N	26
<b>X1T-BT-30C-F</b>	Blue	TWIN 100mm(2ESD)	300N	26
<b>X1T-BS-40C-F</b>	Blue	Single 100mm	400N	35
<b>X1T-BT-40C-F</b>	Blue	TWIN 100mm(2ESD)	400N	35



\*AVAILABLE ALSO IN GREY



## X1T Platform

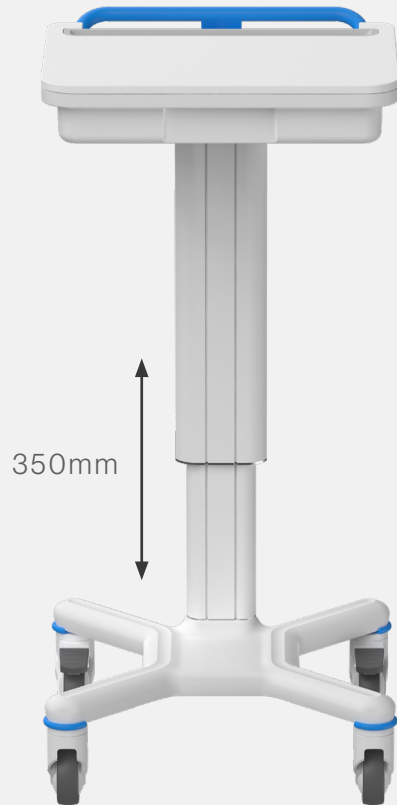
General information	
<b>Base foot print</b>	520x520mm
<b>Case (S09) inner size</b>	(W)440 (D)280 (H) 74 mm
<b>Max Load</b>	50kg
<b>Top Shelf Size</b>	(W)513 (D)406mm
<b>Top Material</b>	HPL/PC case
<b>Compliant with</b>	MDR 2017/745 EN 60601-1
<b>Max Console Load</b>	20kg
<b>Console height range</b>	855 - 1205 mm
<b>Center Vesa height range</b>	1125 - 1605 mm
<b>Vesa max load</b>	12kg
<b>Vesa swivel</b>	(+/-90)
<b>Vesa tilting</b>	-15°+25°
<b>Height adj</b>	35 cm
<b>Packaging</b>	800x600x400 mm
<b>Total Weight</b> without Accessories	30 kg

When using the TWIN 100 mm wheel, the trolley is 20 mm lower.

Ref.	Accent Color	Wheel	Gas spring strenght	Upper part max load
<b>X1T-BS-20C-R</b>	Blue	Single 100mm	200N	17
<b>X1T-BT-20C-R</b>	Blue	TWIN 100mm(2ESD)	200N	17
<b>X1T-BS-30C-R</b>	Blue	Single 100mm	300N	26
<b>X1T-BT-30C-R</b>	Blue	TWIN 100mm(2ESD)	300N	26
<b>X1T-BS-40C-R</b>	Blue	Single 100mm	400N	35
<b>X1T-BT-40C-R</b>	Blue	TWIN 100mm(2ESD)	400N	35

\*AVAILABLE ALSO IN GREY

## X1T Platform



General information	
<b>Base foot print</b>	520x520mm
<b>Max notebook dimension</b>	17"
<b>Max Load</b>	50kg
<b>Console Height range</b>	856 - 1206 mm
<b>Compliant with</b>	MDR 2017/745 EN 60601-1
<b>Max Console Load</b>	20kg
<b>Packaging</b>	800x600x400 mm
<b>Total Weight</b> without Accessories	30 kg

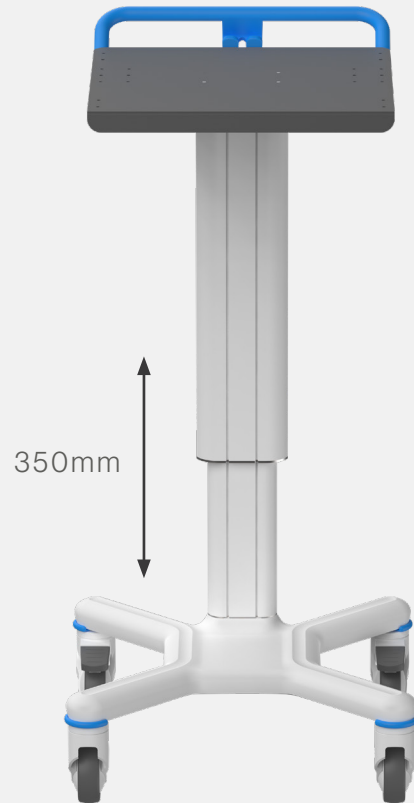
When using the TWIN 100mm wheel, the trolley is 20 mm shorter.

Ref.	Accent Color	Wheel	Gas spring strenght	Upper part max load
<b>X1T-BS-20N</b>	Blue	Single 100mm	200N	17
<b>X1T-BT-20N</b>	Blue	TWIN 100mm(2ESD)	200N	17
<b>X1T-BS-30N</b>	Blue	Single 100mm	300N	26
<b>X1T-BT-30N</b>	Blue	TWIN 100mm(2ESD)	300N	26
<b>X1T-BS-40N</b>	Blue	Single 100mm	400N	35
<b>X1T-BT-40N</b>	Blue	TWIN 100mm(2ESD)	400N	35

● ● \*AVAILABLE ALSO IN GREY



## X1T Platform



General information	
<b>Base foot print</b>	525x525mm
<b>Max Load</b>	50kg
<b>Top Shelf Size</b>	440(W)X400(D)mm
<b>Top Material</b>	Steel
<b>Compliant with</b>	MDR 2017/745 EN 60601-1
<b>Max Console Load</b>	20kg
<b>Console height range</b>	812 - 1162 mm
<b>Packaging</b>	800x600x400 mm
<b>Total Weight</b> without Accessories	30 kg

When using the TWIN 100mm wheel, the trolley is 20 mm shorter.

Ref.	Accent Color	Wheel	Gas spring strenght	Upper part max load
<b>X1T-BS-20M</b>	Blue	Single 100mm	200N	17
<b>X1T-BT-20M</b>	Blue	TWIN 100mm(2ESD)	200N	17
<b>X1T-BS-30M</b>	Blue	Single 100mm	300N	26
<b>X1T-BT-30M</b>	Blue	TWIN 100mm(2ESD)	300N	26
<b>X1T-BS-40M</b>	Blue	Single 100mm	400N	35
<b>X1T-BT-40M</b>	Blue	TWIN 100mm(2ESD)	400N	35

  \*AVAILABLE ALSO IN GREY

# all the accessories you need

Ask for custom accessories, we will design them for your application!

## IV POLE

ART. CODE: **015MLTACC**

(H) 350mm

Max load 4Kg  
2Kg per hook



## CAMERA HOLDER

ART. CODE: **010MLTACC**

**Support to be mounted on VESA with  
Height adjustment from 19" to 27"**

Camera Plate 150x150 mm

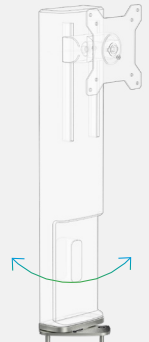
Max load 1,5Kg



## PIVOT HINGE FOR HEIGHT ADJ.VESA

ART. CODE: **019MLTACC**

**Support to be mounted on VESA  
+-90°**

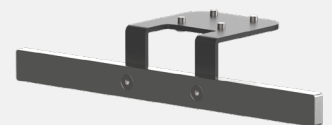


## SIDE RAIL 10x25mm DIN rail

ART. CODE: **028MLTACC**

Length 30 cm

Max load 4Kg



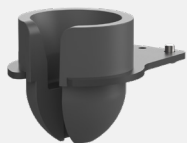


## PROBE HOLDER A

ART. CODE: **023MLTACC**

Inner ø min 16 mm  
Inner ø max 55 mm  
Inner Height 42mm

Max load 1Kg



## PROBE HOLDER B

ART. CODE: **024MLTACC**

Inner ø min 20 mm  
Inner ø max 55 mm  
Inner Height 82mm

Max load 3Kg

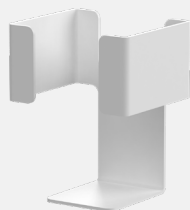


## SANITIZER GEL HOLDER

ART. CODE: **013MLTACC**

Inner dimensions:  
80x80mm  
Height 112mm

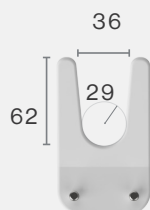
Max load 1Kg



## BARCODE A

ART. CODE: **005MLTACC**

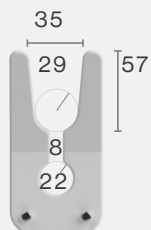
Max load 2Kg



## BARCODE B

ART. CODE: **006MLTACC**

Max load 2Kg



## PROBE HOLDER C

ART. CODE: **033MLTACC**

PMMA Transparent



Max load 3Kg

## PROBE HOLDER D

ART. CODE: **034MLTACC**

PMMA Transparent



Max load 3Kg

## PROBE HOLDER E

ART. CODE: **035MLTACC**

PMMA Transparent



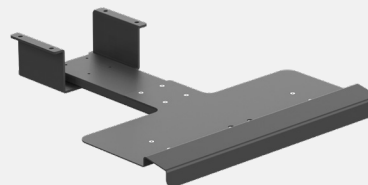
Max load 3Kg

## QWERTY SUPPORT

ART. CODE: **025MLTACC**

(W) 490mm  
(D) 155mm

Max load 1Kg



## L-R MOUSEPAD

ART. CODE: **017MLTACC**

REQUIRES QWERTY SUPPORT

(W) 140 mm  
(D) 170 mm

Max load 1Kg



## PC BASKET

ART. CODE: **007MLTACC**

Polycarbonate, finish: frosted



(W) 333mm  
(D) 243mm  
(H) 101mm  
Max load 3Kg

## WIRED BIN

ART. CODE: **031MLTACC**



(W) 315mm  
(D) 100mm  
(H) 135mm

Max load 3Kg

## PC DRAWER

ART. CODE: **014MLTACC**

Polycarbonate, finish: frosted



(W) 333 mm  
(D) 243mm  
(H) 101mm  
Max load 3Kg

## SHELF

ART. CODE: **032MLTACC**

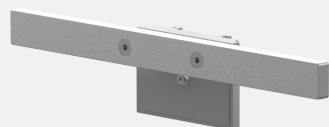


Internal dimensions  
(W) 390mm  
(D) 310mm

Max load 3Kg

## COLUMN RAIL

ART. CODE: **011MLTACC**



(W) 300mm,  
Max load 4Kg

## PC SUPPORT

ART. CODE: **030MLTACC**



Internal dimensions  
(W) 440mm  
(D) 185mm

Max load 10Kg

## PRINTER TRAY

ART. CODE: **021MLTACC**



Inner dim.  
(W) 450 mm,  
(D) 380mm,

Max load 10Kg

## AL DRAWER N

ART. CODE: **002MLTACC**

with NUMERIC LOCKING SYSTEM



Inner dim.  
(W) 347mm  
(D) 277mm  
(H) 110 mm

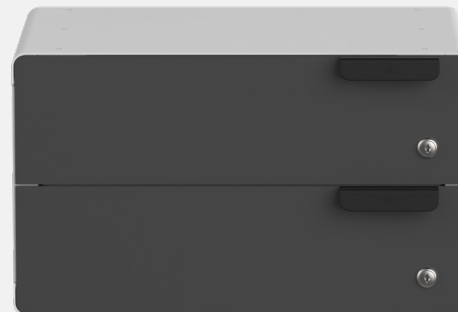
Outer dim.  
(W) 417 mm  
(D) 300 mm  
(H) 160mm

Max load 3Kg

## ISO DRAWER

ART. CODE: **004MLTACC**

with KEY LOCKING SYSTEM



Outer dim.  
(W) 465 mm  
(D) 317 mm  
(H) 268mm

Max load 6Kg



compatible with  
**SALTO lockers**



## AL DRAWER K

ART. CODE: **003MLTACC**

with KEY LOCKING SYSTEM



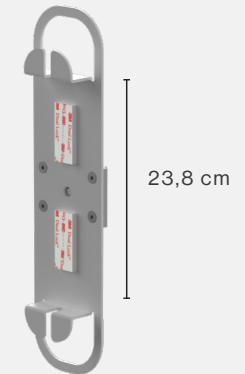
compatible with  
**SALTO lockers**

## SOCKET/PSU SUPPORT

ART. CODE: **029MLTACC**

(W) 96 mm  
(H) 238 mm

Max load 3Kg



9,6

## MEDICAL SOCKET SUPPORT

ART. CODE: **018MLTACC**

**Ehman multi sockets not included  
To be ordered separately  
(medical multi sockets)**

(W) 96 mm  
(H) 453 mm

Max load 3Kg



## DC POWER BATTERY SUPPORT

ART. CODE: **012MLTACC**

ready for QPD DC Box  
DCPower4C battery

**Housing**  
(W) 260 mm  
(D) 105 mm  
(H) 351mm

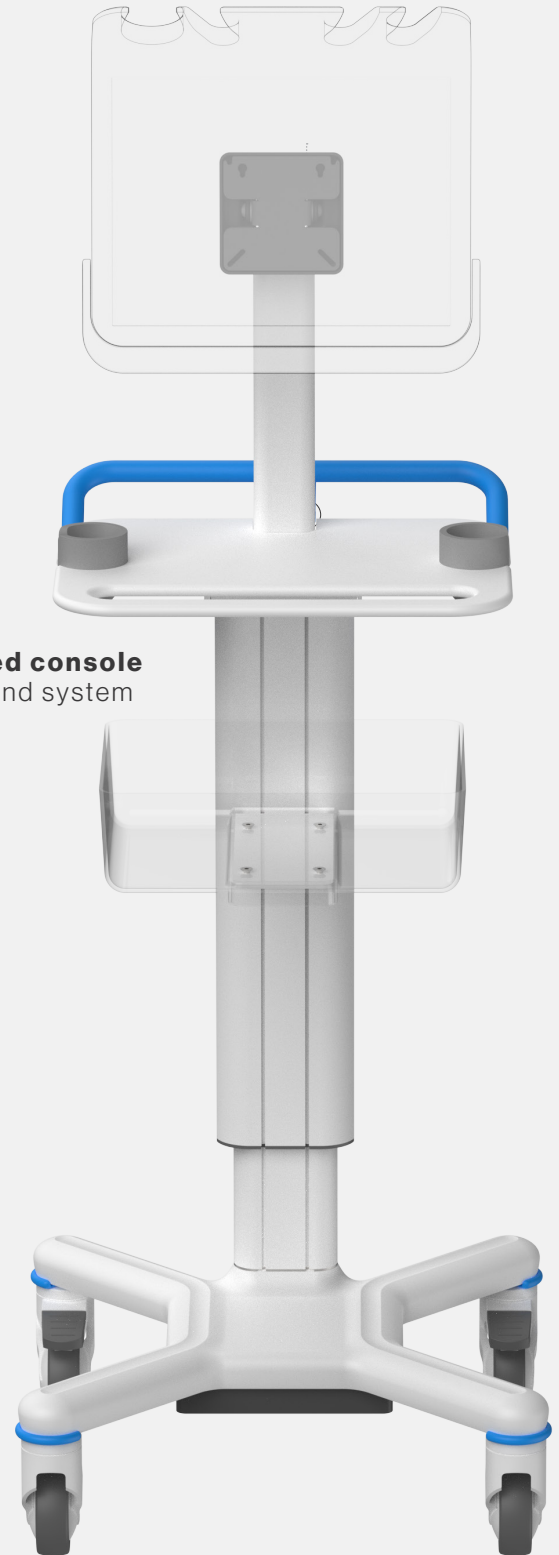
Max load 9Kg

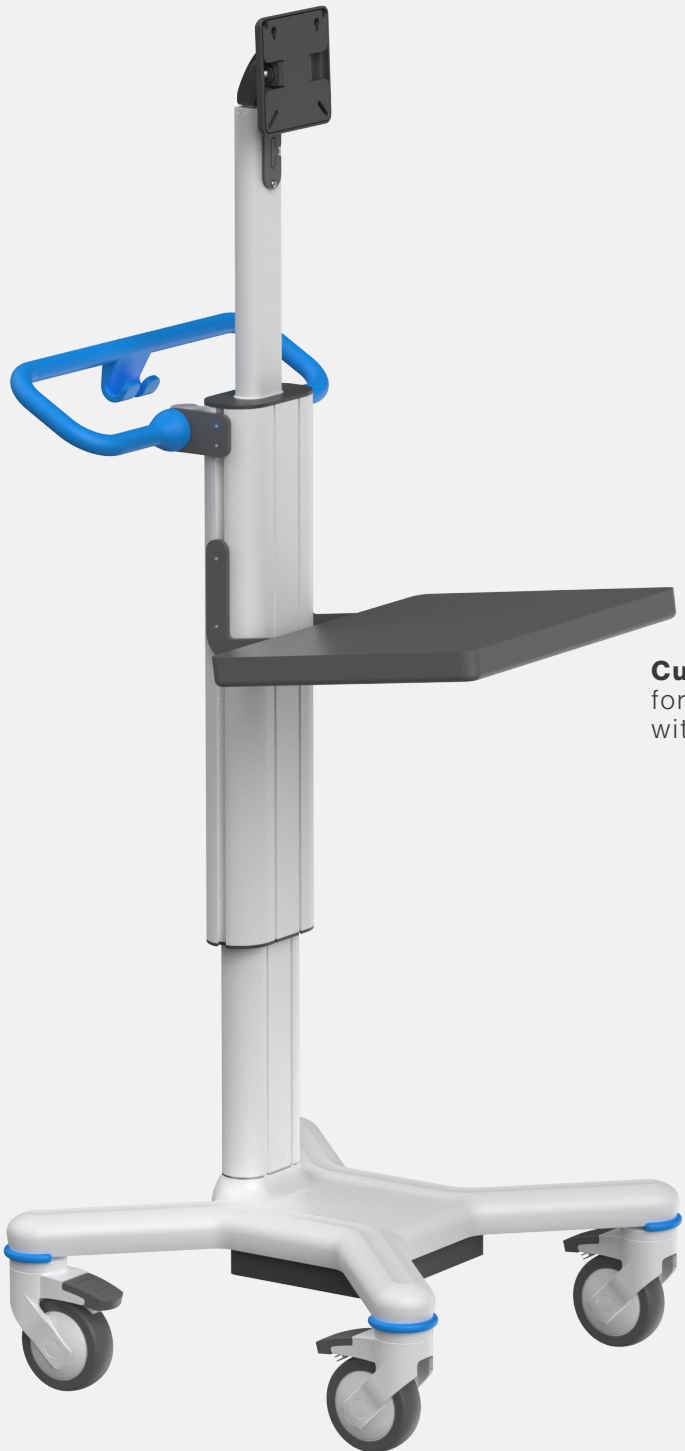


# Some examples of custom Configurations

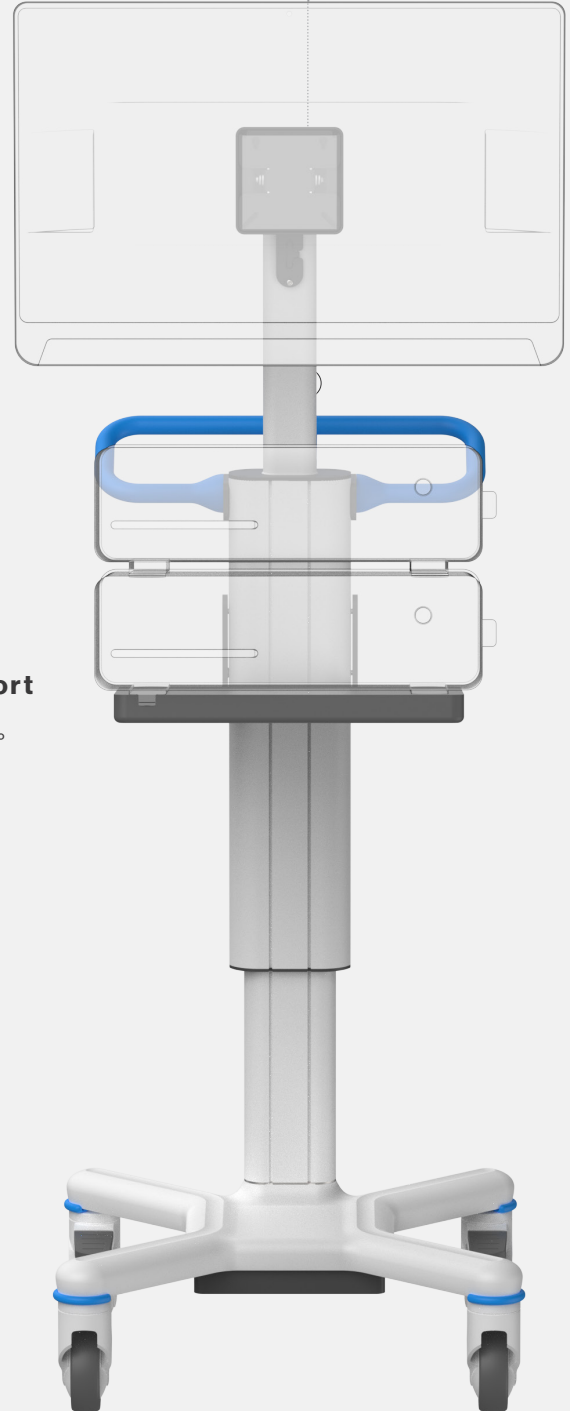
Custom accessories for medical trolleys are essential for optimizing efficiency and organization in healthcare settings. These accessories, tailored to specific needs, include drawer dividers, lockable compartments, adjustable shelving, power outlets, waste bins, accessory hooks, documentation holders, and customized labeling. By integrating these features, medical facilities can streamline workflow, enhance patient care delivery, and ensure a clean and organized environment.

**Customized console**  
for ultrasound system





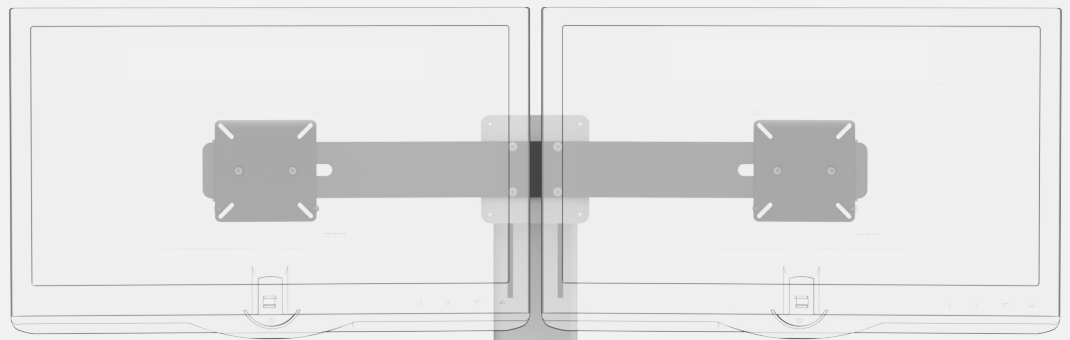
**Customized support**  
for endo devices  
with inclination of 8°



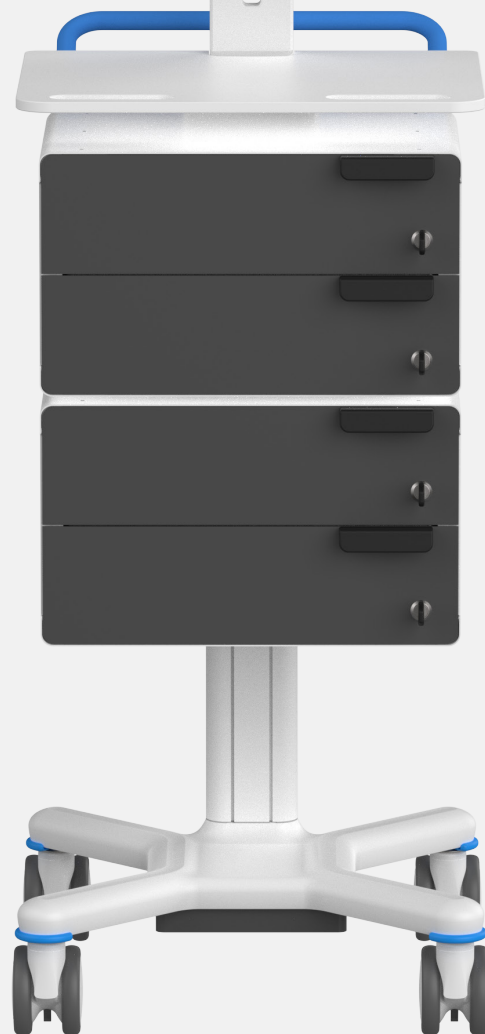
**Custom solutions**

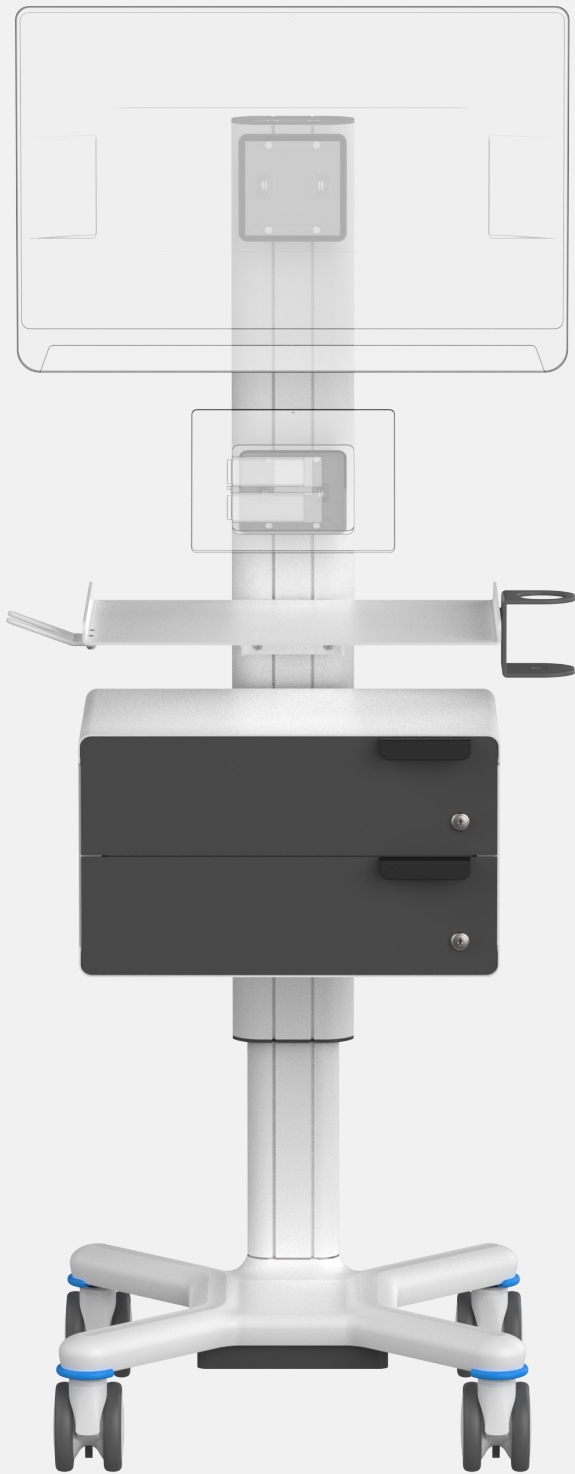


**No console version**  
N. 2, 24" panel PC



**Double monitor**  
N. 2, 24" panel PC





**Extra long column**  
for 2 monitor (up/down)

**Custom solutions**

# MULTIX

MLTCAT X1T\_02 (EN)



design by:  
**rezzonico** | *design*

Multix Solutions s.r.l.  
phone +39 031 4100263

[info@multix-trolley.com](mailto:info@multix-trolley.com)  
[www.multix-trolley.com](http://www.multix-trolley.com)

Via Padre Rovagnati, 2  
22066 Mariano Comense  
COMO - ITALY

Made in Italy  


## CATALOGUE

X1 T