

X1 PLATFORM 



PURE ALUMINIUM DESIGN
MEDICAL TROLLEY

X1 PLATFORM

Compact and Robust

Efficient and **Compact Design**

Our platform's compact design ensures it fits seamlessly in various medical settings, from busy hospital wards to compact clinics. Despite its small footprint, it boosts efficiency and keeps essential tools within reach, proving indispensable for healthcare professionals.

Durable and **Robust Construction**

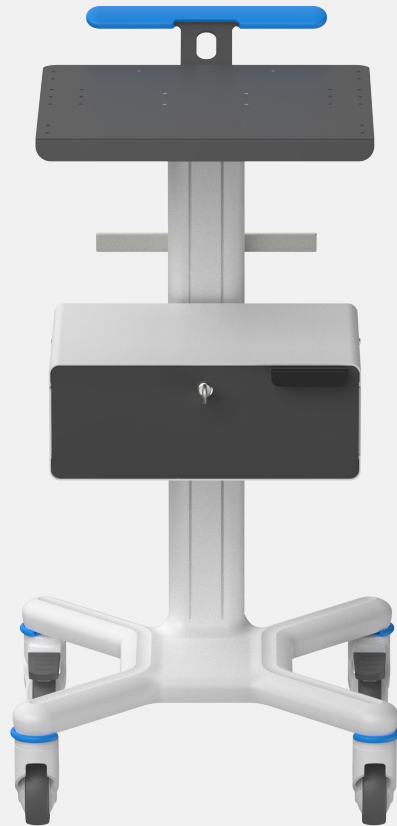
Constructed from high-quality materials, the Multix platform is built to endure the rigors of healthcare environments, offering unwavering reliability and a long-lasting solution for any medical facility.

Adaptable to **Your Needs**

Recognizing the diversity of medical practices, **our platform offers versatile configurations**, detailed in the following pages. Beyond these, **we also provide customization** options to meet the specific demands of your facility, from adjustable compartments to unique add-on features.

The Multix platform is more than equipment—it's a partner in enhancing healthcare delivery. Discover how our compact, robust, and customizable solution can revolutionize your practice.

Multix: Your Partner in Healthcare Excellence



X1BS77M accessorized with:

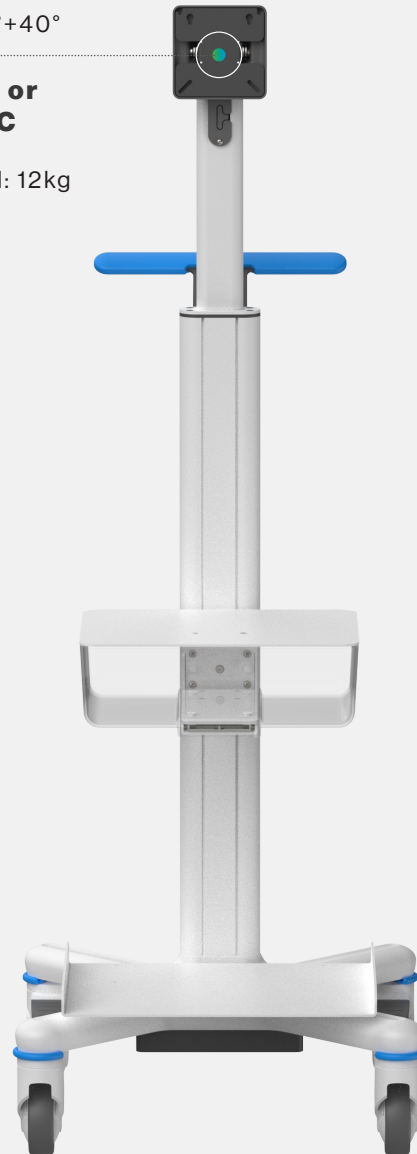
AI Drawer (Code 003MLTACC)
Column Rail (Code 011MLTACC)

Swivelling $\pm 30^\circ$

Tilting $0^\circ + 40^\circ$

**Monitor or
Panel PC**

Up to 24"
Max Load: 12kg



X1BS84PF accessorized with:

PC Drawer (Code 014MLTACC)
Shelf (Code 032MLTACC)

Let us inspire you

Swivelling $\pm 30^\circ$

Tilting $0^\circ + 40^\circ$

**Monitor or
Panel PC**

Up to 24"

Max Load: 12kg



X1BS77HF accessorized with:

Basket	(Code 007MLTACC)
Gel Holder	(Code 013MLTACC)
Barcode B	(Code 006MLTACC)

UP to 13 cm

Tilting $-15^\circ + 25^\circ$

**Monitor or
Panel PC**

Up to 24"

Max Load: 12kg



X1GT84CR accessorized with:

PC Drawer	(Code 014MLTACC)
Qwerty Tray	(Code 025MLTACC)
Mouse Pad	(Code 017MLTACC)

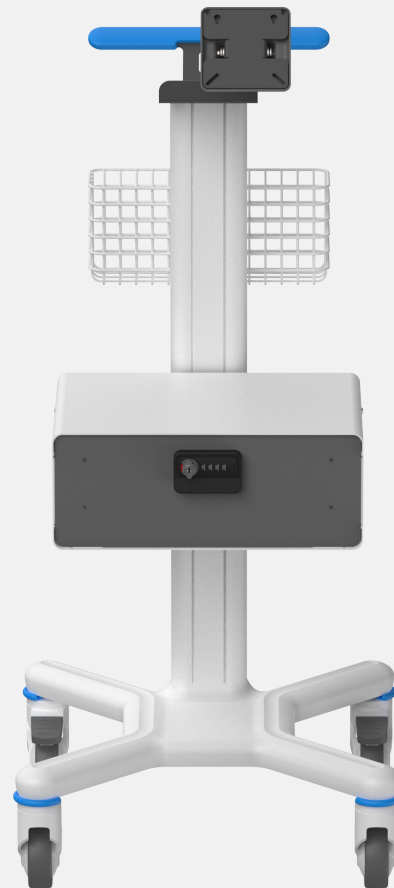


Console for Notebook
UP to 17"



X1BT77N accessorized with:
ISO Drawer (Code 004MLTACC)

Support VESA for tablet
UP to 13"



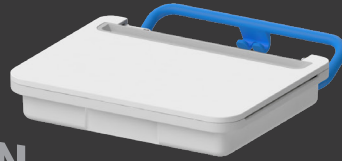
X1BS84T accessorized with:
Wired bin (Code 031MLTACC)
AI Drawer (Code 002MLTACC)

Let us inspire you

X1 Platform



N



C



F



R

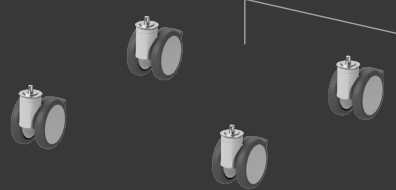


Accent Color

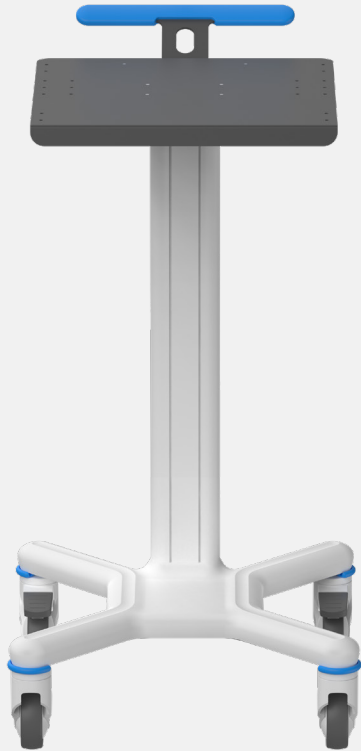
● G Gray

● B Blue

T



X1 Platform



General information

Base foot print	520x520mm
Max Load	50kg
Top Shelf Size	440(W)x400(D) mm
Top Material	Steel
Compliant with	MDR 2017/745 EN 60601-1
Max Console Load	20kg

Ref.	Color Handle Bumper	Wheel	Column Lenght	Console Height	Packaging	Total Weight without Accessories
					Dimensions mm	
X1-BS-70M	Blue	Single 100mm	700mm	900 mm	800x600x400	20Kg
X1-BT-70M	Blue	TWIN 100mm(2ESD)	700mm	880 mm	800x600x400	20Kg
X1-BS-77M	Blue	Single 100mm	770mm	970 mm	800x600x400	20Kg
X1-BT-77M	Blue	TWIN 100mm(2ESD)	770mm	950 mm	800x600x400	20Kg
X1-BS-84M	Blue	Single 100mm	840mm	1040 mm	900x600x400	20Kg
X1-BS-84M	Blue	TWIN 100mm(2ESD)	840mm	1020 mm	900x600x400	20Kg

● ● *AVAILABLE ALSO IN GREY



X1 Platform

General information	
Base foot print	520x520mm
Max Load	50kg
Top Shelf Size	510(W)X410(D)mm
Top Material	HPL
Compliant with	MDR 2017/745 EN 60601-1
Max Console Load	20kg
Vesa height adj	130 mm
Vesa max load	12kg
Vesa swivel	(+/-90)
Vesa tilting	-15°+25°

Ref.	Color Handle Bumper	Wheel	Column Length	Console Height	Center Vesa Height MAX	Packaging Dimensions mm	Total Weight without Accessories
X1-BS-70L-R	Blue	Single 100mm	700mm	905 mm	1306 mm	800x600x400	20Kg
X1-BT-70L-R	Blue	TWIN 100mm(2ESD)	700mm	885 mm	1286 mm	800x600x400	20Kg
X1-BS-77L-R	Blue	Single 100mm	770mm	975 mm	1376 mm	800x600x400	20Kg
X1-BT-77L-R	Blue	TWIN 100mm(2ESD)	770mm	955 mm	1356 mm	800x600x400	20Kg
X1-BS-84L-R	Blue	Single 100mm	840mm	1045 mm	1446 mm	900x600x400	20Kg
X1-BS-84L-R	Blue	TWIN 100mm(2ESD)	840mm	1025 mm	1426 mm	900x600x400	20Kg

  *AVAILABLE ALSO IN GREY



X1 Platform

General information	
Base foot print	520x520mm
Max Load	50kg
Top Shelf Size	510(W)X410(D)mm
Top Material	HPL with front handle
Compliant with	MDR 2017/745 EN 60601-1
Max Console Load	20kg
Vesa height adj	130 mm
Vesa max load	12kg
Vesa swivel	(+/-90)
Vesa tilting	-15°+25°

Ref.	Color Handle Bumper	Wheel	Column Lenght	Console Height	Center Vesa Height MAX	Packaging Dimensions mm	Total Weight without Accessories
X1-BS-70H-R	Blue	Single 100mm	700mm	905 mm	1306 mm	800x600x400	20Kg
X1-BT-70H-R	Blue	TWIN 100mm(2ESD)	700mm	885 mm	1286 mm	800x600x400	20Kg
X1-BS-77H-R	Blue	Single 100mm	770mm	975 mm	1376 mm	800x600x400	20Kg
X1-BT-77H-R	Blue	TWIN 100mm(2ESD)	770mm	955 mm	1356 mm	800x600x400	20Kg
X1-BS-84H-R	Blue	Single 100mm	840mm	1045 mm	1446 mm	900x600x400	20Kg
X1-BS-84H-R	Blue	TWIN 100mm(2ESD)	840mm	1025 mm	1426 mm	900x600x400	20Kg

● ● *AVAILABLE ALSO IN GREY



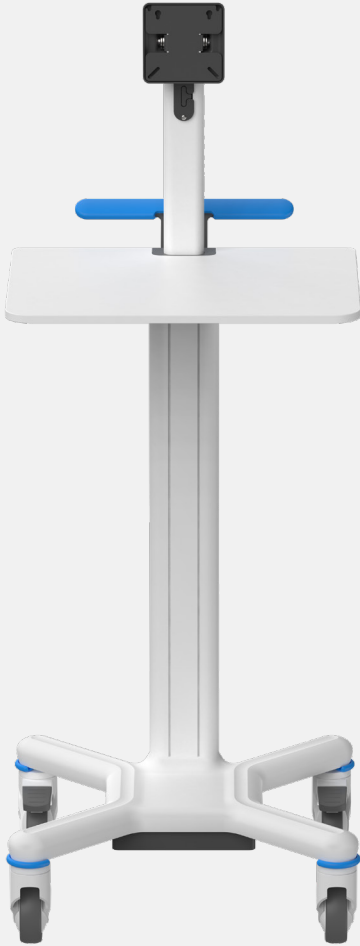
X1 Platform

General information	
Base foot print	520x520mm
Max Load	50kg
Top Shelf Size	510(W)X410(D)mm
Top Material	HPL with handle
Compliant with	MDR 2017/745 EN 60601-1
Max Console Load	20kg
Vesa max load	12kg
Vesa swivel	(+/-30)
Vesa tilting	-0°+40°

Ref.	Color Handle Bumper	Wheel	Column Lenght	Console Height	Center Vesa Height	Packaging Dimensions mm	Total Weight without Accessories
X1-BS-70H-F	Blue	Single 100mm	700mm	905 mm	1230 mm	800x600x400	20Kg
X1-BT-70H-F	Blue	TWIN 100mm(2ESD)	700mm	885 mm	1210 mm	800x600x400	20Kg
X1-BS-77H-F	Blue	Single 100mm	770mm	975 mm	1300 mm	800x600x400	20Kg
X1-BT-77H-F	Blue	TWIN 100mm(2ESD)	770mm	955 mm	1280 mm	800x600x400	20Kg
X1-BS-84H-F	Blue	Single 100mm	840mm	1045 mm	1370 mm	900x600x400	20Kg
X1-BS-84H-F	Blue	TWIN 100mm(2ESD)	840mm	1025 mm	1350 mm	900x600x400	20Kg



*AVAILABLE ALSO IN GREY



X1 Platform

General information	
Base foot print	520x520mm
Max Load	50kg
Top Shelf Size	510(W)X410(D)mm
Top Material	HPL
Compliant with	MDR 2017/745 EN 60601-1
Max Console Load	20kg
Vesa max load	12kg
Vesa swivel	(+/-30)
Vesa tilting	-0°+40°

Ref.	Color Handle Bumper	Wheel	Column Lenght	Console Height	Center Vesa Height	Packaging Dimensions mm	Total Weight without Accessories
X1-BS-70L-F	Blue	Single 100mm	700mm	905 mm	1230 mm	800x600x400	20Kg
X1-BT-70L-F	Blue	TWIN 100mm(2ESD)	700mm	885 mm	1210 mm	800x600x400	20Kg
X1-BS-77L-F	Blue	Single 100mm	770mm	975 mm	1300 mm	800x600x400	20Kg
X1-BT-77L-F	Blue	TWIN 100mm(2ESD)	770mm	955 mm	1280 mm	800x600x400	20Kg
X1-BS-84L-F	Blue	Single 100mm	840mm	1045 mm	1370 mm	900x600x400	20Kg
X1-BS-84L-F	Blue	TWIN 100mm(2ESD)	840mm	1025 mm	1350 mm	900x600x400	20Kg



*AVAILABLE ALSO IN GREY



X1 Platform

General information	
Base foot print	520x520mm
Case (S09) inner size	(W)440 (D)280 (H) 74 mm
Max Load	50kg
Top Shelf Size	(W)513 (D)406mm
Top Material	HPL with plastic case
Compliant with	MDR 2017/745 EN 60601-1
Max Console Load	20kg
Vesa max load	12kg
Vesa swivel	(+/-90)
Vesa tilting	-15° +25°

Ref.	Color Handle Bumper	Wheel	Column Lenght	Console Height	Center Vesa Height MAX	Packaging Dimensions mm	Total Weight without Accessories
X1-BS-70C-R	Blue	Single 100mm	700mm	995 mm	1396 mm	800x600x400	20Kg
X1-BT-70C-R	Blue	TWIN 100mm(2ESD)	700mm	975 mm	1376 mm	800x600x400	20Kg
X1-BS-77C-R	Blue	Single 100mm	770mm	1065 mm	1466 mm	800x600x400	20Kg
X1-BT-77C-F	Blue	TWIN 100mm(2ESD)	770mm	1045 mm	1446 mm	800x600x400	20Kg
X1-BS-84C-R	Blue	Single 100mm	840mm	1135 mm	1536 mm	900x600x400	20Kg
X1-BS-84C-R	Blue	TWIN 100mm(2ESD)	840mm	1115 mm	1516 mm	900x600x400	20Kg

  *AVAILABLE ALSO IN GREY



X1 Platform

General information	
Base foot print	520x520mm
Max Load	50kg
Top Shelf Size	(W)513 (D)406mm
Case (S09) inner size	(W)440,(D)280,(H)74 mm
Top Material	HPL with plastic case
Compliant with	MDR 2017/745 EN 60601-1
Max Console Load	20kg
Vesa max load	12kg
Vesa swivel	(+/-30)
Vesa tilting	-0°+40°

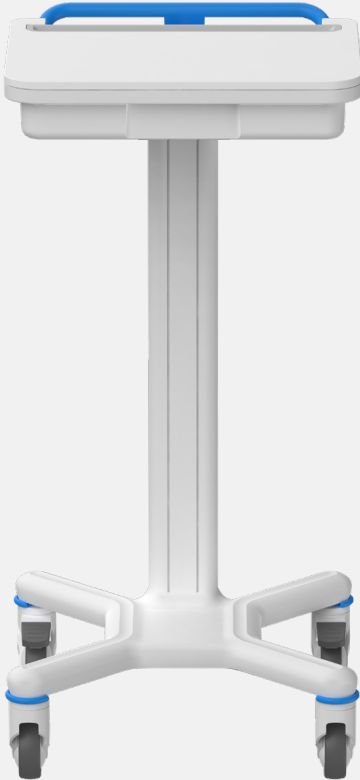
Ref.	Color	Wheel	Column Length	Console Height	Center Vesa Height	Packaging Dimensions mm	Total Weight without Accessories
X1-BS-70C-F	Blue	Single 100mm	700mm	995 mm	1351mm	800x600x400	20Kg
X1-BT-70C-F	Blue	TWIN 100mm(2ESD)	700mm	975 mm	1331mm	800x600x400	20Kg
X1-BS-77C-F	Blue	Single 100mm	770mm	1065 mm	1421mm	800x600x400	20Kg
X1-BT-77C-F	Blue	TWIN 100mm(2ESD)	770mm	1045 mm	1401mm	800x600x400	20Kg
X1-BS-84C-F	Blue	Single 100mm	840mm	1135 mm	1491mm	900x600x400	20Kg
X1-BS-84C-F	Blue	TWIN 100mm(2ESD)	840mm	1115 mm	1471mm	900x600x400	20Kg



*AVAILABLE ALSO IN GREY



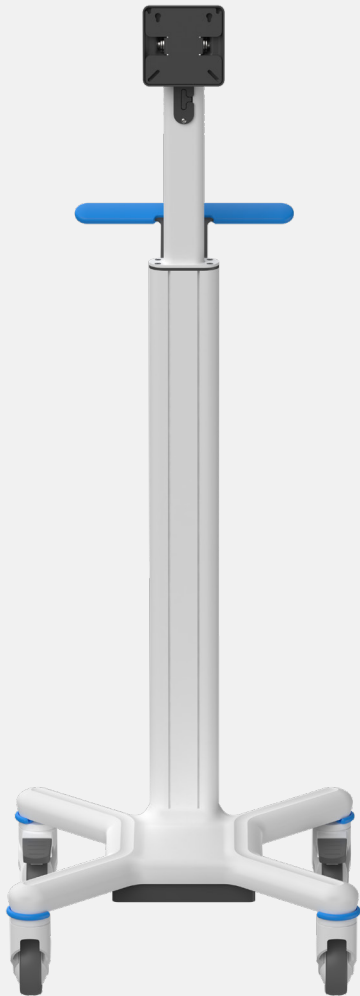
X1 Platform



General information	
Base foot print	520x520mm
Max notebook dimension	17"
Max Load	50kg
Top Shelf Size	(W)513 (D)406mm
Case (S09) inner size	(W)440,(D)280,(H)74 mm
Top Material	HPL with plastic case
Compliant with	MDR 2017/745 EN 60601-1
Max Console Load	20kg

Ref.	Color	Wheel	Column Length	Console Height	Packaging Dimensions mm	Total Weight without Accessories
X1-BS-70N	Blue	Single 100mm	700mm	996 mm	800x600x400	20Kg
X1-BT-70N	Blue	TWIN 100mm(2ESD)	700mm	976 mm	800x600x400	20Kg
X1-BS-77N	Blue	Single 100mm	770mm	1066 mm	800x600x400	20Kg
X1-BT-77N	Blue	TWIN 100mm(2ESD)	770mm	1046 mm	800x600x400	20Kg
X1-BS-84N	Blue	Single 100mm	840mm	1136 mm	900x600x400	20Kg
X1-BS-84N	Blue	TWIN 100mm(2ESD)	840mm	1116 mm	900x600x400	20Kg

  *AVAILABLE ALSO IN GREY



X1 Platform

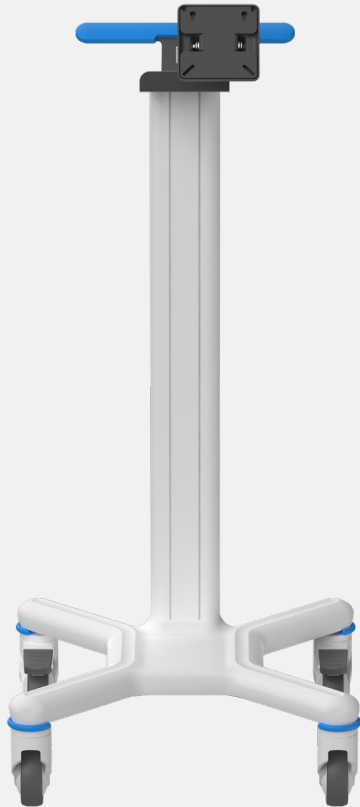
General information	
Base foot print	520x520mm
Max Load	50kg
Tablet vesa attachment	75/100
Compliant with	MDR 2017/745 EN 60601-1
Vesa max load	12kg
Vesa swivel	(+/-30)
Vesa tilting	-0°+40°

Ref.	Color	Wheel	Column Length	Center Vesa Height	Packaging	Total Weight without Accessories
	Handle Bumper				Dimensions mm	
X1-BS-84P-F	Blue	Single 100mm	840mm	1375mm	900x600x400	20Kg
X1-BT-84P-F	Blue	TWIN 100mm(2ESD)	840mm	1355mm	900x600x400	20Kg

*AVAILABLE ALSO IN GREY



X1 Platform



General information	
Base foot print	520x520mm
Max Load	50kg
Tablet vesa attachment	75/100
Compliant with	MDR 2017/745 EN 60601-1
Center Vesa	xxxx
Vesa max load	12kg
Vesa tilting	-0°+40°

Ref.	Accent Color	Wheel	Column Length	Center Vesa Height	Packaging	Total Weight without Accessories
					Dimensions mm	
X1-BS-84T	Blue	Single 100mm	840mm	1121 mm	900x600x400	20Kg
X1-BT-84T	Blue	TWIN 100mm(2ESD)	840mm	1101 mm	900x600x400	20Kg

  *AVAILABLE ALSO IN GREY

all the accessories you need*

*Ask for custom accessories,
we will design them for your
application!

IV POLE

ART. CODE: **015MLTACC**

(H) 350mm

Max load 4Kg
2Kg per hook



CAMERA HOLDER

ART. CODE: **010MLTACC**

**Support to be mounted on VESA with
Height adjustment from 19" to 27"**

Camera Plate 150x150 mm

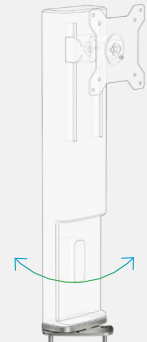
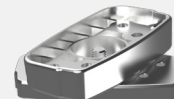
Max load 1,5Kg



PIVOT HINGE FOR HEIGHT ADJ.VESA

ART. CODE: **019MLTACC**

**Support to be mounted on VESA
+-90°**

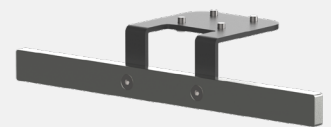


SIDE RAIL 10x25mm DIN rail

ART. CODE: **028MLTACC**

Length 30 cm

Max load 4Kg

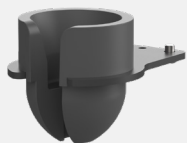


PROBE HOLDER A

ART. CODE: **023MLTACC**

Inner ø min 16 mm
Inner ø max 55 mm
Inner Height 42mm

Max load 1Kg



PROBE HOLDER B

ART. CODE: **024MLTACC**

Inner ø min 20 mm
Inner ø max 55 mm
Inner Height 82mm

Max load 3Kg

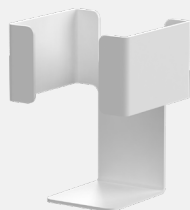


SANITIZER GEL HOLDER

ART. CODE: **013MLTACC**

Inner dimensions:
80x80mm
Height 112mm

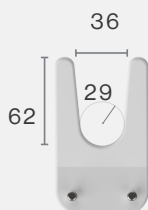
Max load 1Kg



BARCODE A

ART. CODE: **005MLTACC**

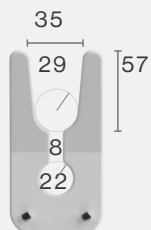
Max load 2Kg



BARCODE B

ART. CODE: **006MLTACC**

Max load 2Kg



PROBE HOLDER C

ART. CODE: **033MLTACC**

PMMA Transparent



Max load 3Kg

PROBE HOLDER D

ART. CODE: **034MLTACC**

PMMA Transparent



Max load 3Kg

PROBE HOLDER E

ART. CODE: **035MLTACC**

PMMA Transparent



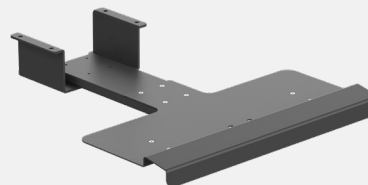
Max load 3Kg

QWERTY SUPPORT

ART. CODE: **025MLTACC**

(W) 490mm
(D) 155mm

Max load 1Kg



L-R MOUSEPAD

ART. CODE: **017MLTACC**

REQUIRES QWERTY SUPPORT

(W) 140 mm
(D) 170 mm

Max load 1Kg



PC BASKET

ART. CODE: **007MLTACC**

Polycarbonate, finish: frosted



(W) 333mm
(D) 243mm
(H) 101mm
Max load 3Kg

WIRED BIN

ART. CODE: **031MLTACC**



(W) 315mm
(D) 100mm
(H) 135mm

Max load 3Kg

PC DRAWER

ART. CODE: **014MLTACC**

Polycarbonate, finish: frosted



(W) 333 mm
(D) 243mm
(H) 101mm
Max load 3Kg

SHELF

ART. CODE: **032MLTACC**

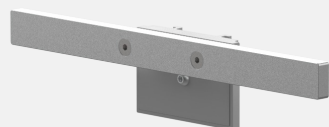


Internal dimensions
(W) 390mm
(D) 310mm

Max load 3Kg

COLUMN RAIL

ART. CODE: **011MLTACC**



(W) 300mm,
Max load 4Kg

PC SUPPORT

ART. CODE: **030MLTACC**



Internal dimensions
(W) 440mm
(D) 185mm

Max load 10Kg

PRINTER TRAY

ART. CODE: **020MLTACC**



Inner dim.
(W) 450 mm,
(D) 380mm,

Max load 10Kg

AL DRAWER N

ART. CODE: **002MLTACC**

with NUMERIC LOCKING SYSTEM



Inner dim.
(W) 347mm
(D) 277mm
(H) 110 mm

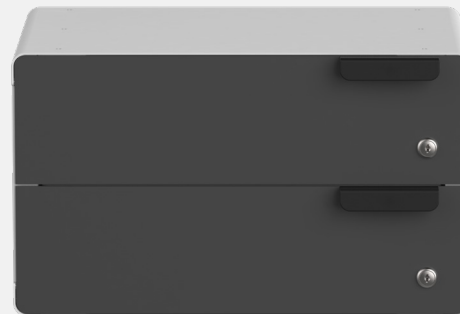
Outer dim.
(W) 417 mm
(D) 300 mm
(H) 160mm

Max load 3Kg

ISO DRAWER

ART. CODE: **004MLTACC**

with KEY LOCKING SYSTEM



Outer dim.
(W) 465 mm
(D) 317 mm
(H) 268mm

Max load 6Kg



compatible with
SALTO lockers



AL DRAWER K

ART. CODE: **003MLTACC**

with KEY LOCKING SYSTEM



compatible with
SALTO lockers

SOCKET/PSU SUPPORT

ART. CODE: **029MLTACC**

(W) 96 mm
(H) 238 mm

Max load 3Kg



23,8 cm

9,6

MEDICAL SOCKET SUPPORT

ART. CODE: **018MLTACC**

**Ehman multi sockets not included
To be ordered separately
(medical multi sockets)**

(W) 96 mm
(H) 453 mm

Max load 3Kg



DC POWER BATTERY SUPPORT

ART. CODE: **012MLTACC**

ready for QPD DC Box
DCPower4C battery

Housing

(W) 260 mm
(D) 105 mm
(H) 351mm

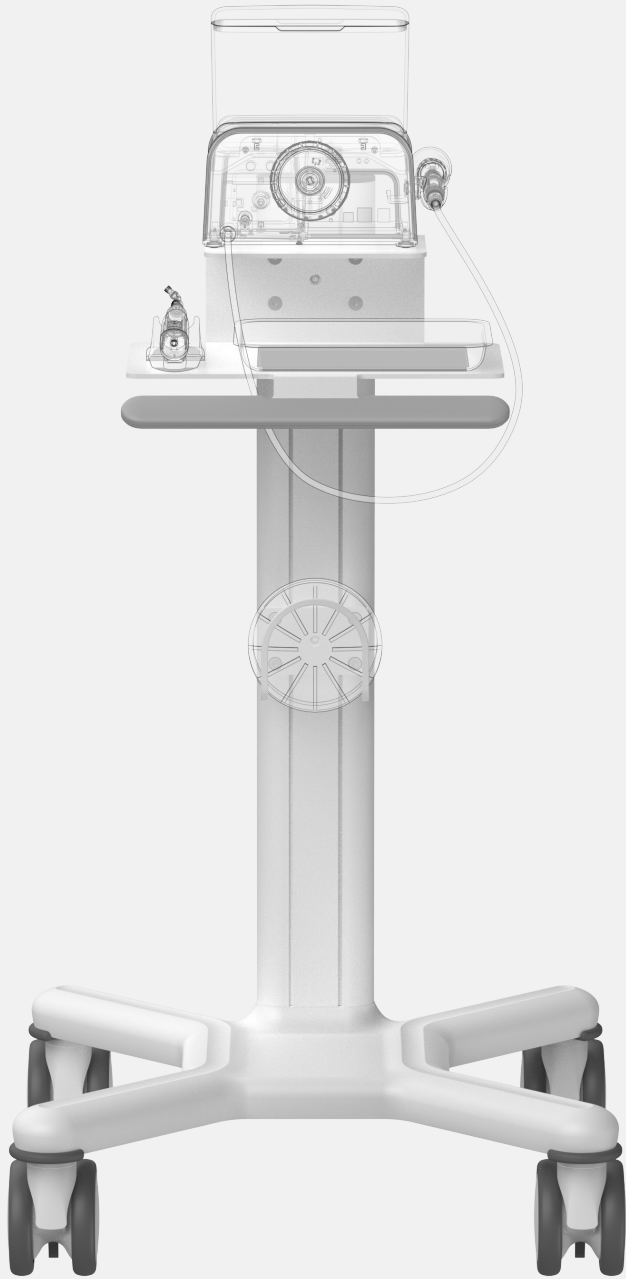
Max load 9Kg



Some examples of custom Configurations

Custom accessories for medical trolleys are essential for optimizing efficiency and organization in healthcare settings. These accessories, tailored to specific needs, include drawer dividers, lockable compartments, adjustable shelving, power outlets, waste bins, accessory hooks, documentation holders, and customized labeling. By integrating these features, medical facilities can streamline workflow, enhance patient care delivery, and ensure a clean and organized environment.





Customized console
for dental device



Customized support

MULTIX

MLTCAT X1_01 (EN)



design by:
rezzonico | *design*

Multix Solutions s.r.l.
phone +39 031 4100263

info@multix-trolley.com
www.multix-trolley.com

Via Padre Rovagnati, 2
22066 Mariano Comense
COMO - ITALY

Made in Italy


CATALOGUE

X1